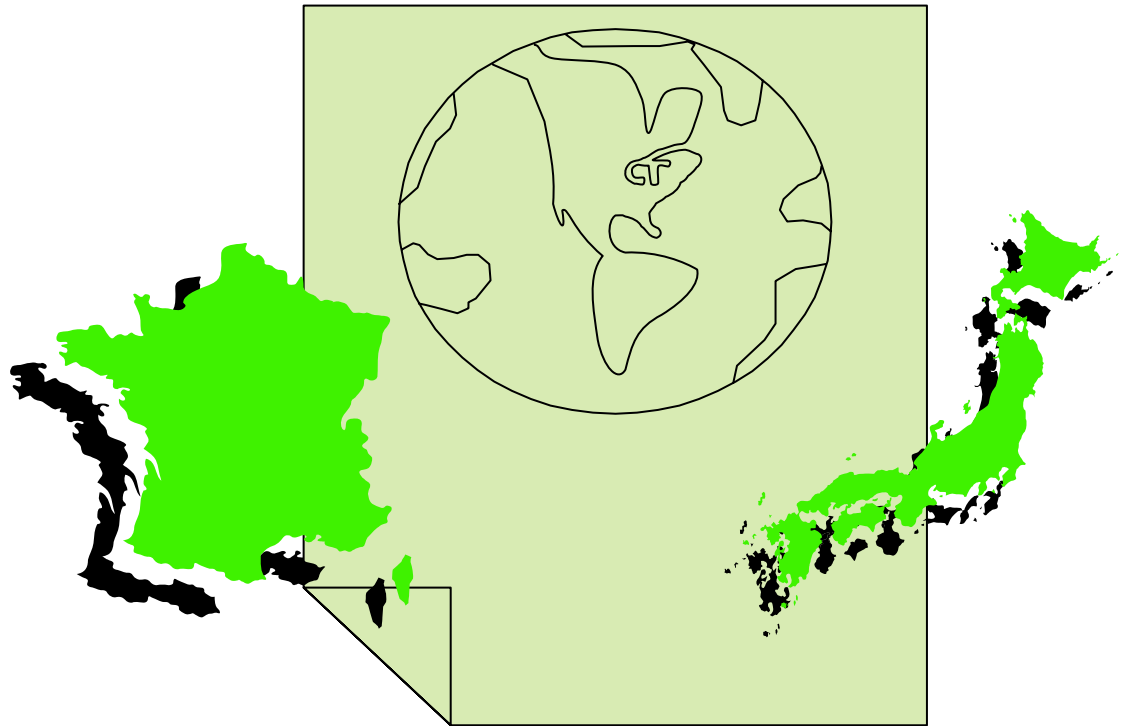
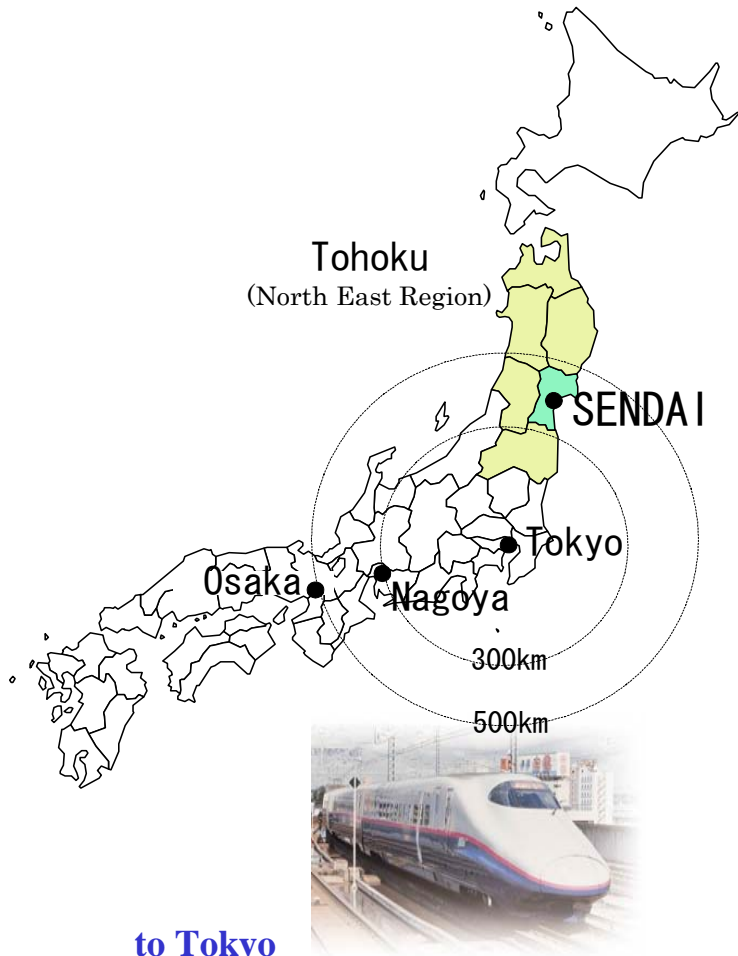


# Joint Forum for Dialogue with Regional Industrial Partners



## CAPITAL CITY OF “TOHOKU”

- Tohoku : 10 million in population  
: €280,000 million in GDP
- SENDAI : one million in population  
: €38,000 million in GDP



to Tokyo

- 96 min. by SHINKANSEN
- More than 60 Train traffics /day

## High Level of Quality of Life



According to various researches, Sendai was ranked first as the best city in Japan where people want to live.

## Academic City



**TOHOKU University**



**Institute for Materials Reserch**



**Institute of Fluid Science**

Sendai's strength lies in its abundance of world class research and development institutions close at hand.



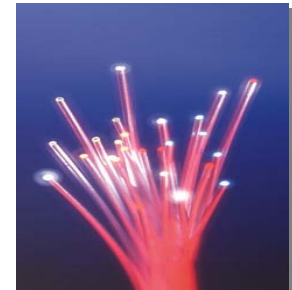
KS Magnet steel(1922)



PIN Diode(1950)



Yagi-Uda Antenna(1929)

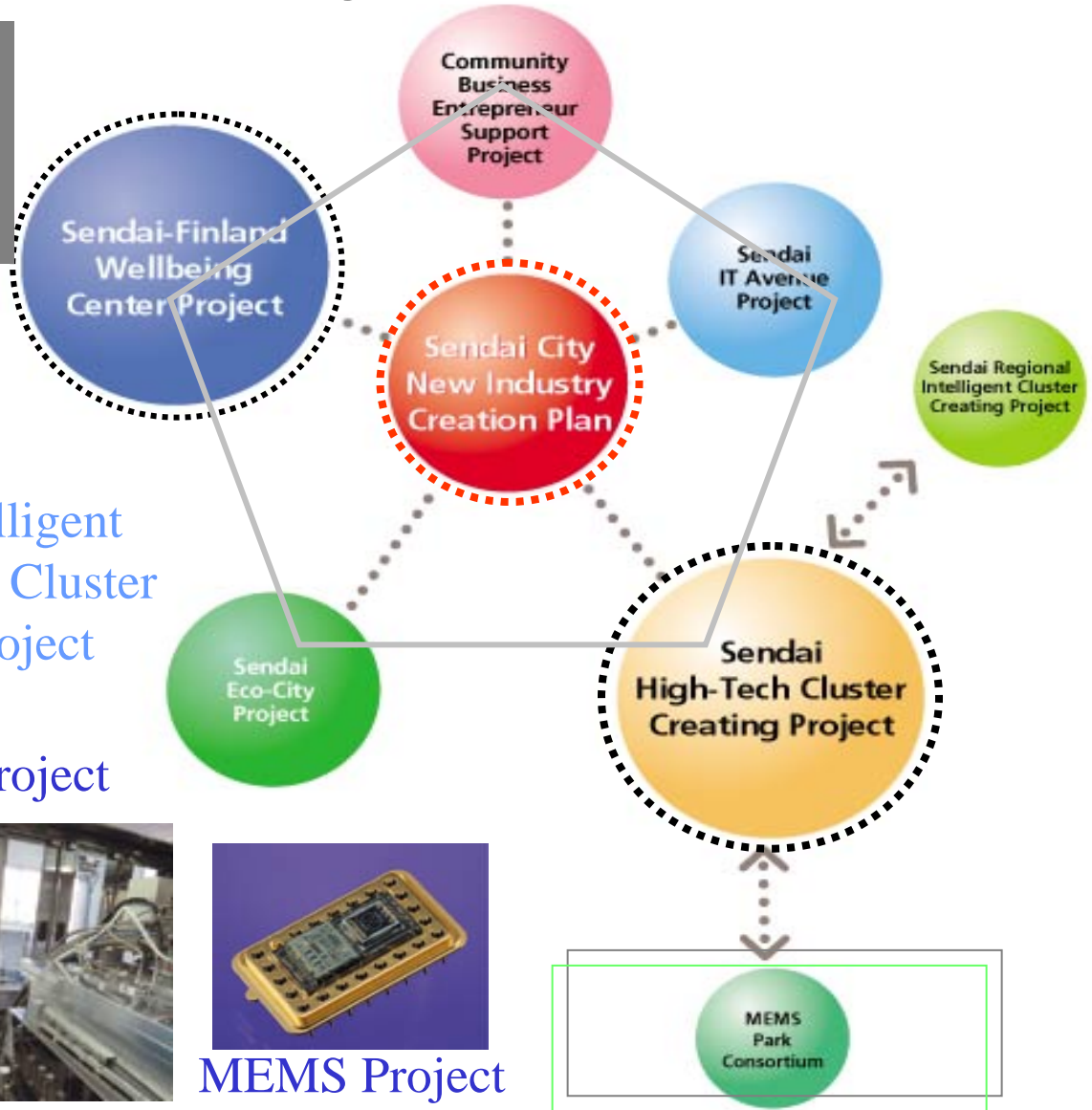


*Dr. Koichi Tanaka,  
Nobel Laureate, Grad of Tohoku Univ.*

# Sendai New Industry Creation Plan

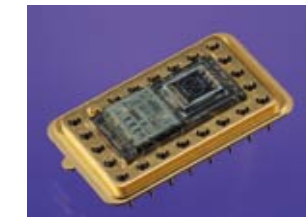


Sendai Finland Wellbeing Center



Sendai Intelligent Knowledge Cluster Creating Project

High-Tech Cluster Creating Project



MEMS Project



# Sendai-Finland Wellbeing Centre Project

- Sendai and Finland collaborate to create high-value added services and equipments to support independent life of the elderly.



## 1. R&D Unit

The R&D Unit has function as an incubator for private companies and universities. The users' voices are easily introduced in the process of R&D activities by collaborating with the Care Unit.

## 2. Care Unit

It is a nursing home for the elderly and has 100 independent rooms for long-term care, 20 rooms for short stay, day service for 15 elderly persons. This unit provides the needs information of the elderly and evaluates the services and equipments that developed in R&D unit.



**New Welfare  
Services**

**&**

**New Welfare  
Equipments**

**The facilities opened in March 2005**

# Sendai MEMS Project

## MEMS Park Consortium

Establish in Oct. 2004

Universities  
& Institutes

Companies

Information Exchange  
Human Resource Development  
Research & Development

Local Government



*108 Organizations*

### Major Companies

Tokyo Electron Limited

Hitachi Ltd / Toyota Center R&D Labs Inc

Mitsubishi Electric Corporation / Canon Inc

### Local Companies

NEC Tokin Corporation

Kitanihon Electric Cable Corporation

Tohoku Semiconductor Corporation

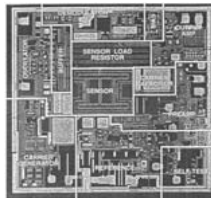
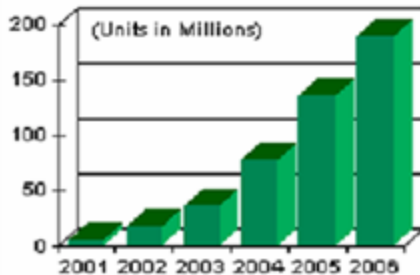
Creating MEMS  
Technology Cluster

## TOHOKU UNIVERSITY

Professor ESASHI Masayoshi – a fellow of local collaboration in Sendai.

## MEMS CORE Inc.

Worldwide Forecast for MEMS in Consumer Electronics



★ **New cooperation with Fraunhofer Gesellschaft(FhG) in Munich, Germany**



→ The City of Sendai has held a joint symposium about MEMS technology in Sendai on 19th of October 2005, to mark the first anniversary of the MEMS Park Consortium.

# Industry Promotion Strategy

- \*We provide demonstration field.
- \*We are promoting international collaboration in business field.
- \*We welcome external fund.

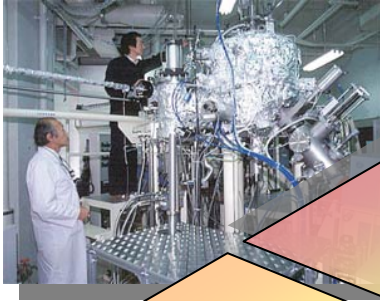


Developing  
globally competitive  
**Cluster**

concentration of  
**Companies  
&  
Institutes**

implementation of  
**Projects**

accumulation of  
**Seeds**



- We support to establish ventures.
- We promote industry-academic collaboration.
- We provide support for management.

# City Structure and Technology Cluster in SENDAI

