



Promotion of Industry-University-Government Cooperation at Tohoku University.

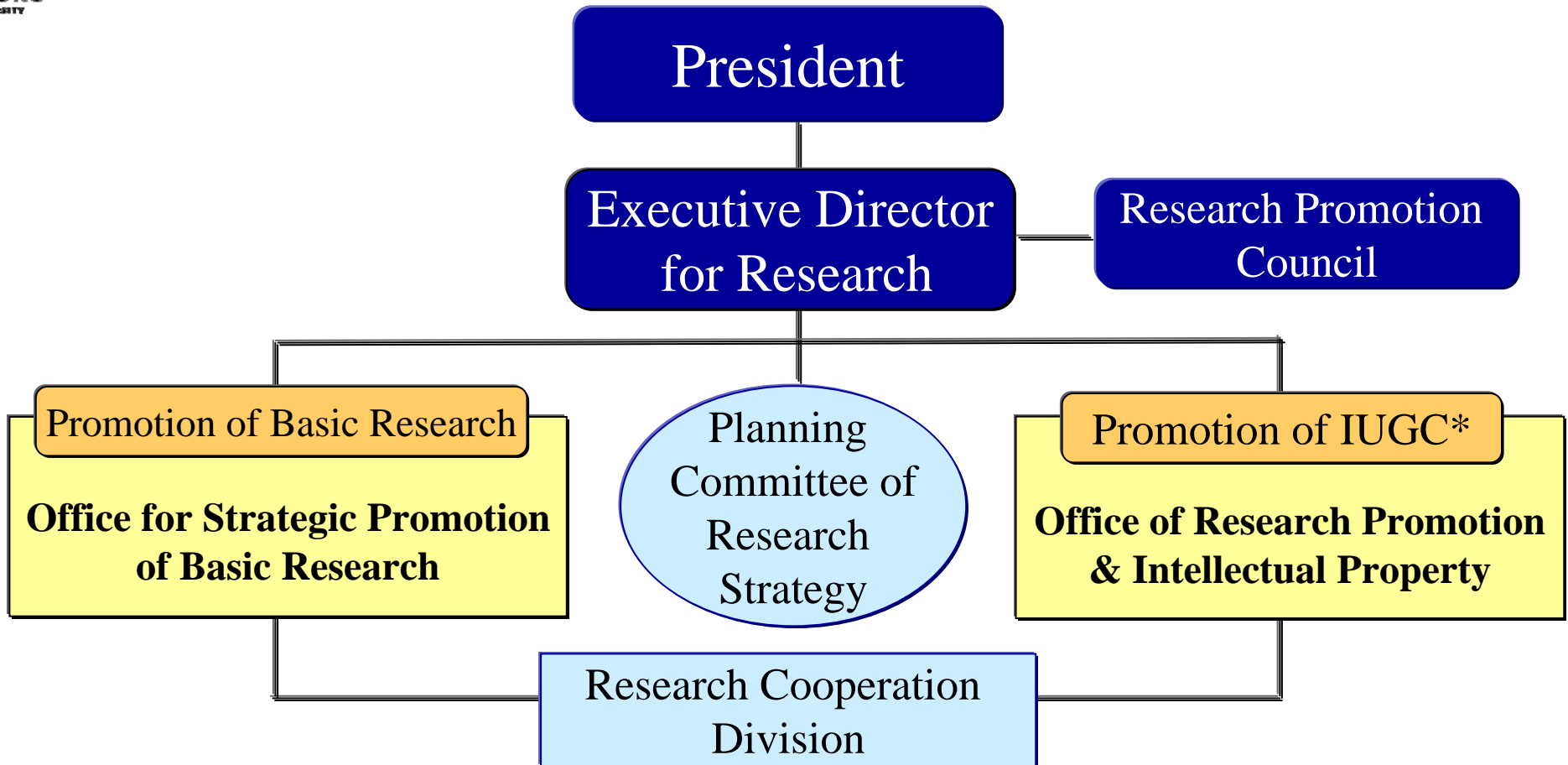


Shimoyama Tadao,

Director, Research Promotion Division

Office of Research Promotion and Intellectual Property

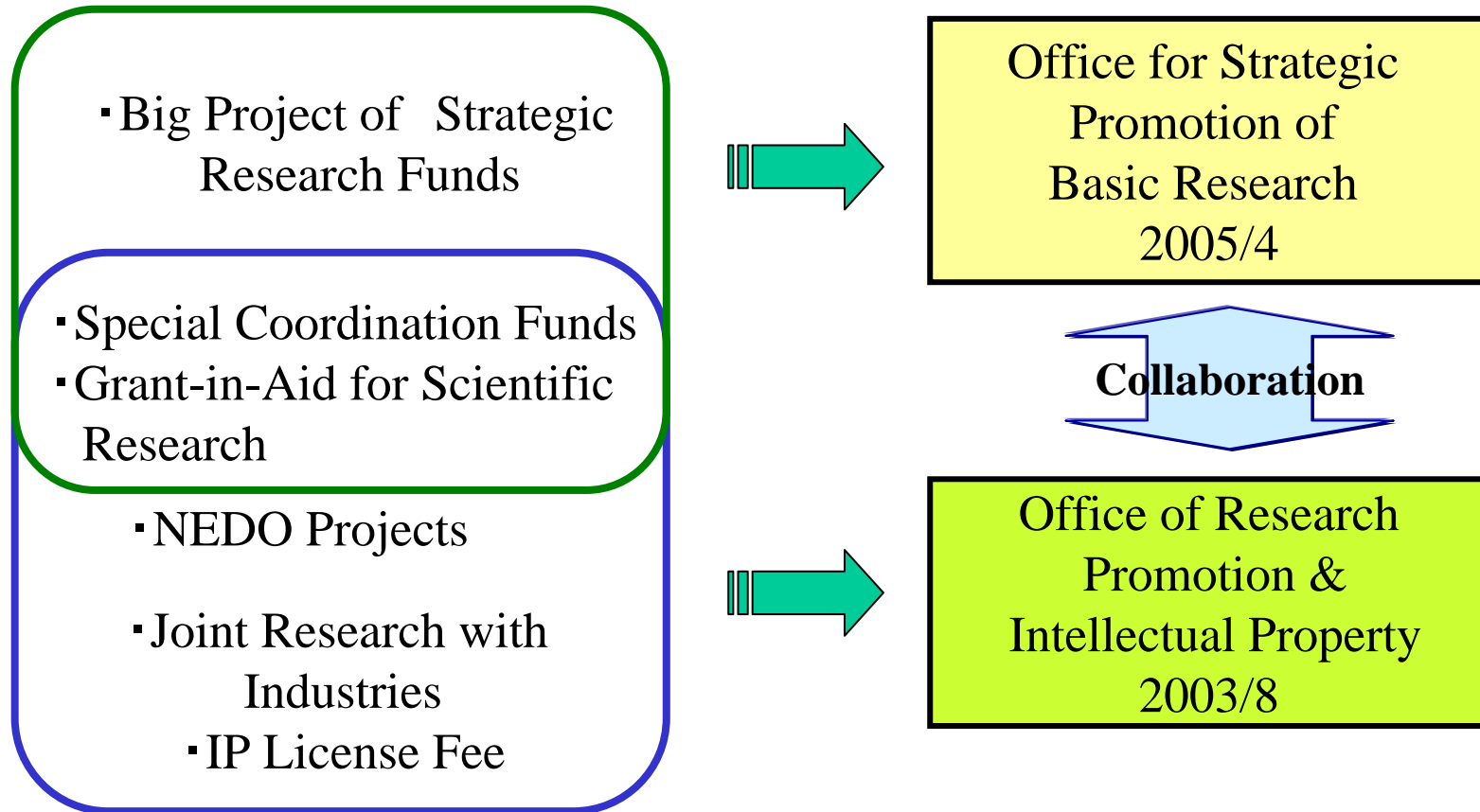
Organization of Research Promotion



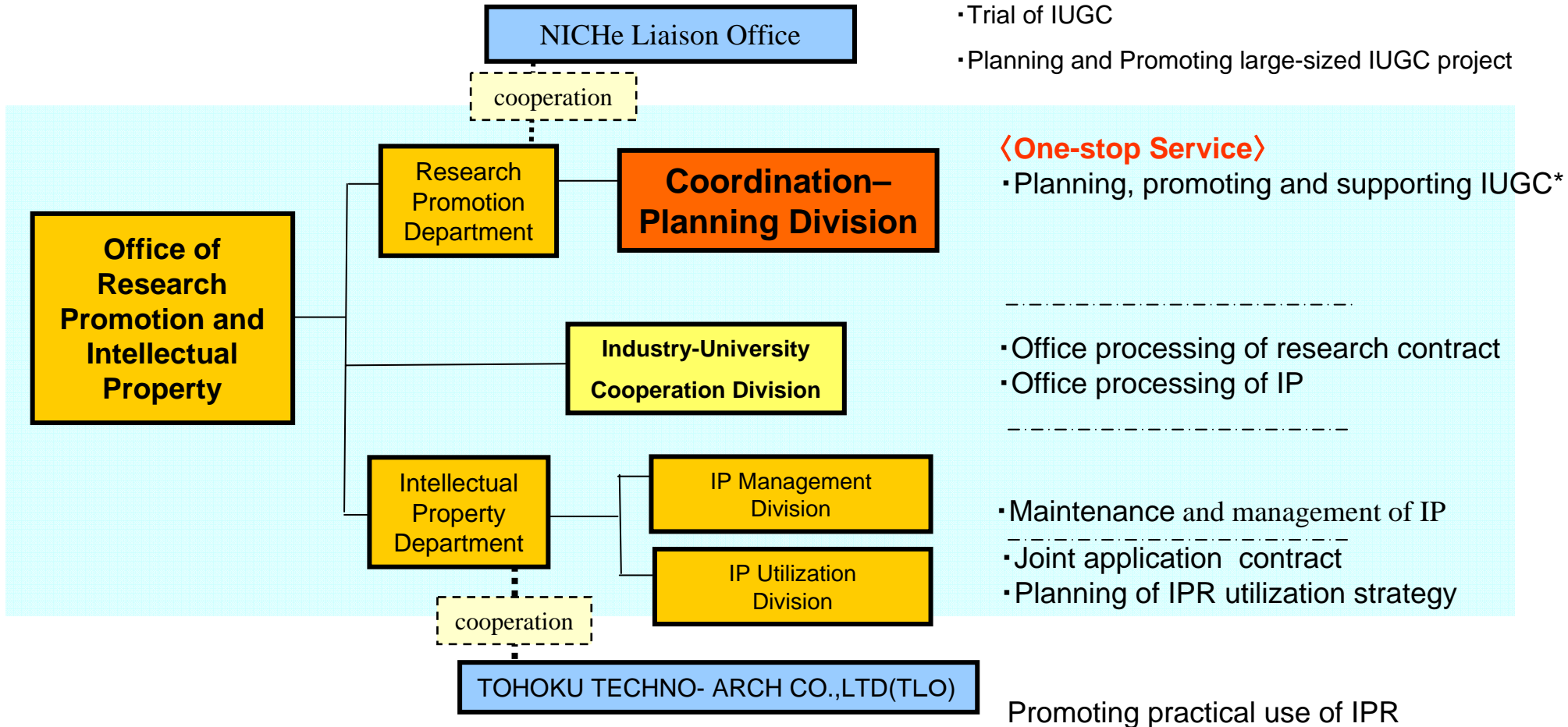
*IUGC: Industry-University-Government Cooperation

Mission of respective offices

Funds



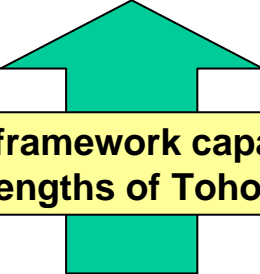
Tohoku University Office of Research Promotion and Intellectual Property



*IUGC : Industry-University-Government Cooperation

Goals of promotion framework for IUGC* at Tohoku University

- Enhancement of international competitiveness of Japanese industry.
- 1) Contribution to development of Japanese economy and society
2) Contribution to advancement of local Industry
- Establishment of IUGC* comparable to that of major overseas Universities

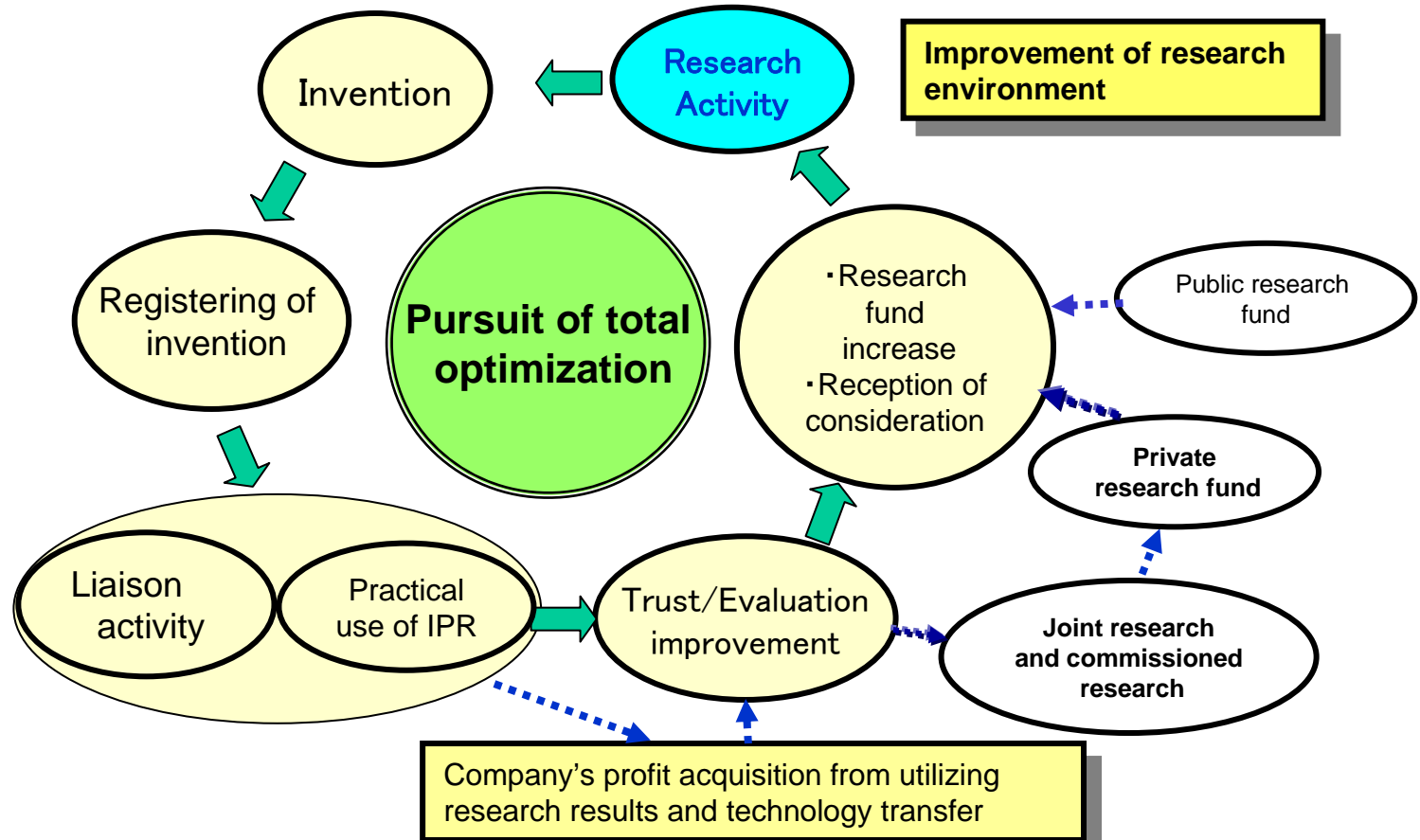


**Establishment of framework capable of exercising
collective strengths of Tohoku University**

*IUGC: Industry-University-Government Cooperation

- **Shift from “Passive” approach to “Active” approach / Active acquisition of private research fund (Proposal of University planning and new cooperation model)**
- **Shift from dependence on “individual response” to dependence on “strategic/organizational response” (institutional responsibility)**
- **Exercise of strengths of University (combination of on-campus resources)**

Intellectual Creation Cycle at Tohoku Univ.



Promotion model for Industrial-University-Government Cooperation :
By Practical use of research results / Maintenance of research environment

Enhancement of promotive and supportive structure of IUGC*

○One-stop service for IUGC* activities

Research promotion division takes over part of NICHe liaison activities, such as technology consultation service and regional partnership service, and unify several on-campus contact services regarding IUGC in order for one-stop service to appropriately correspond to internal/external needs.



*IUGC: Industry-University-Government Cooperation

○Establishment and offering of a wide range of IUGC* Model satisfactory to company needs

Joint research with company falls into three categories: i) company-designating-university-faculty contract; ii) Research cooperation agreement; iii) University [company]-proposing research consortium.



○Enhancement of R&D Management

IUGC coordinator makes proper research development managements: i) organization of optimized research project; ii) establishment of research development plan (including milestone); iii) establishment of research development funding plan; iv) assistance to research development evaluation.



○Enhancement of Incubation Facility

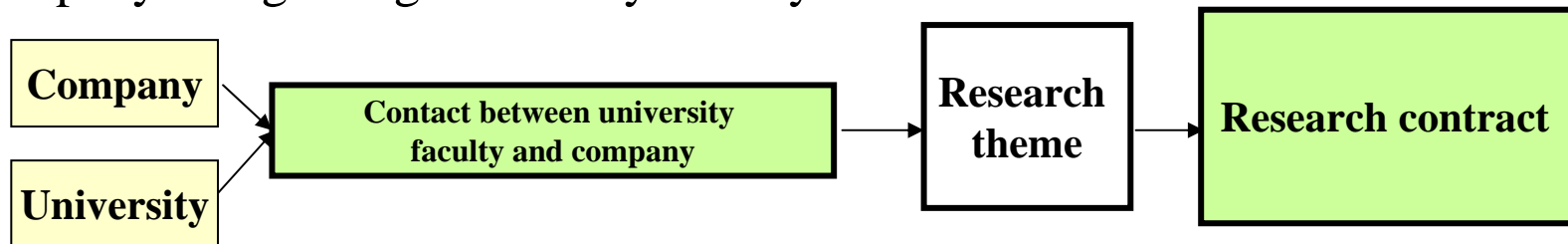
From the aspect of enhancement of practical application research and setting-up of ventures through IUGC activities, Tohoku University (plan to) operates following two incubation facilities, Hatchery Square, and University-cooperating Incubator(2006).



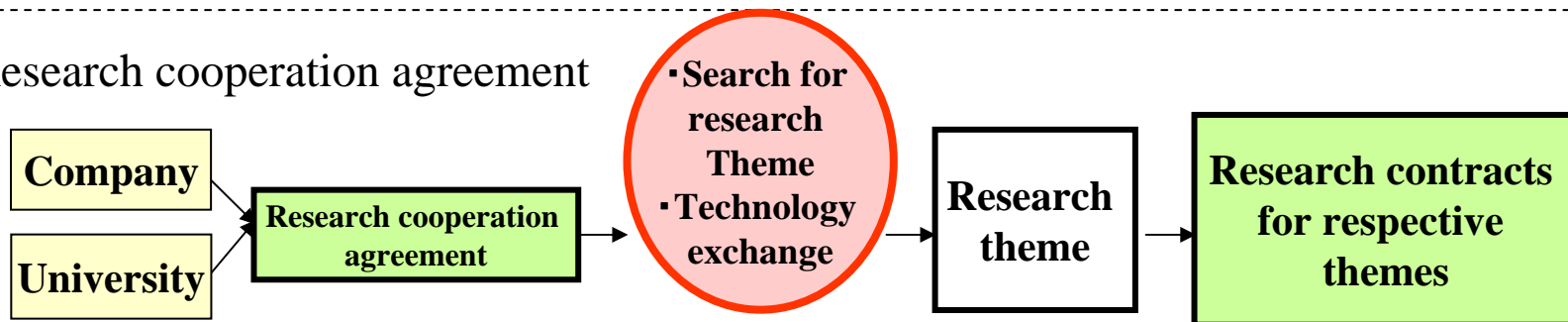
TOHOKU
UNIVERSITY

IUGC* Model

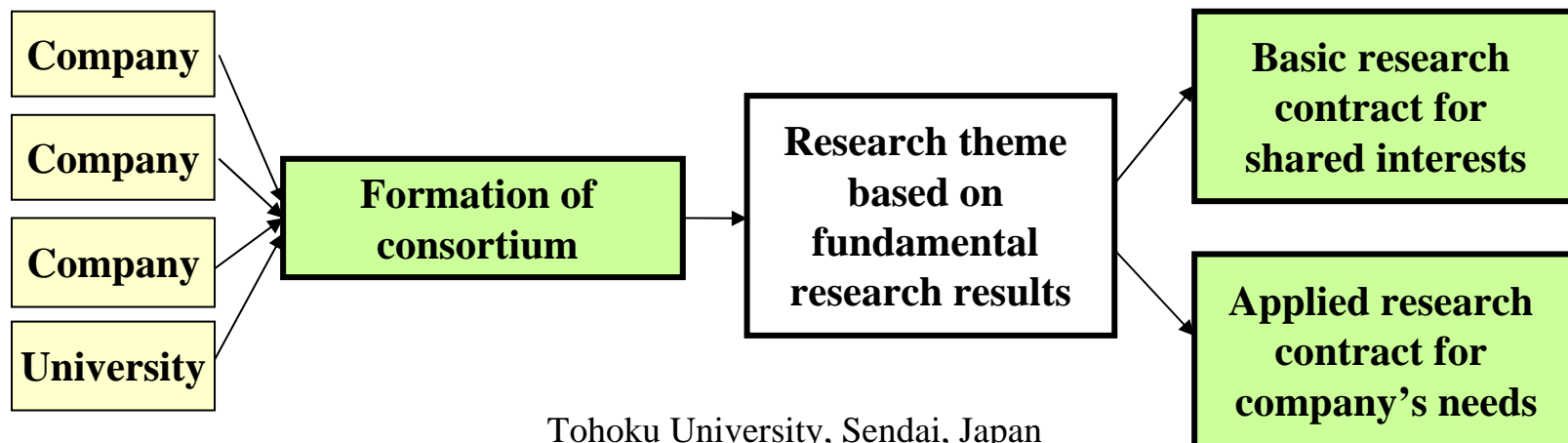
① Company-designating-university-faculty contract



② Research cooperation agreement



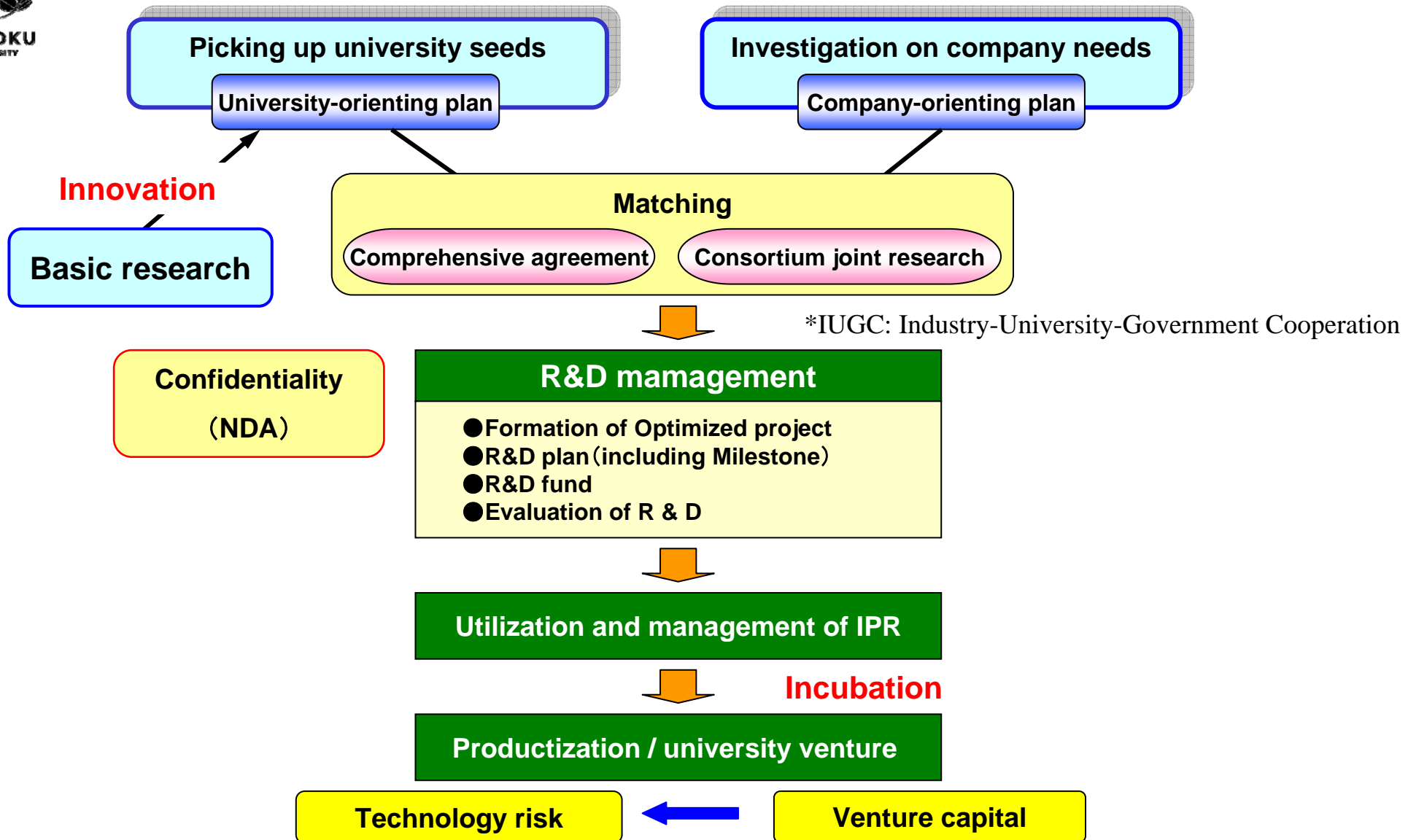
③ University-proposing research consortium



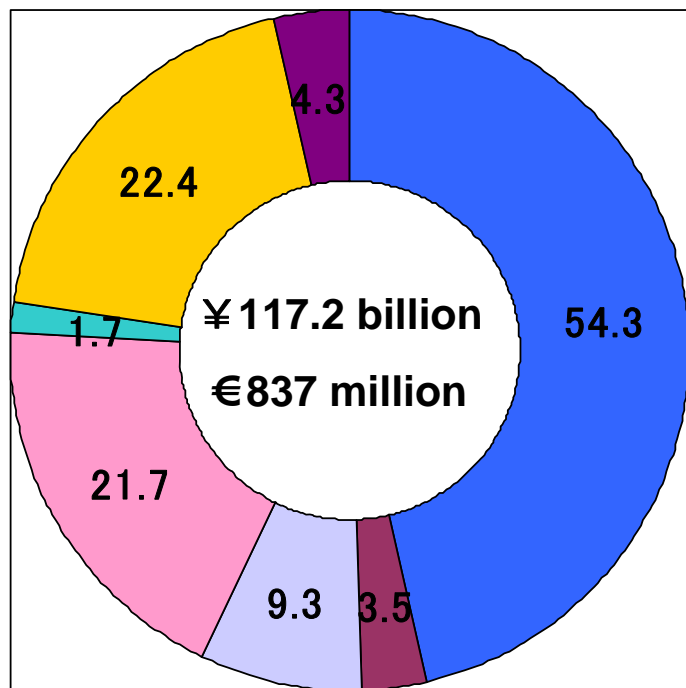
Tohoku University, Sendai, Japan

*IUGC: Industry-University-Government Cooperation

IUGC* R&D Management

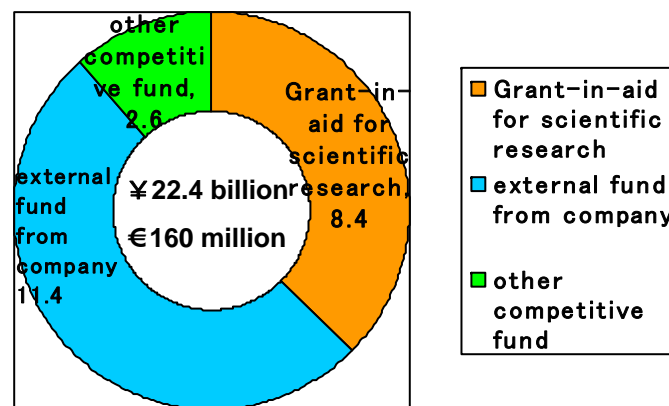


■ University operating revenue FY2004



- operating grant
- equipment servicing grant
- tuition income
- hospital income
- miscellaneous income
- external research grant and fund
- long-term debt

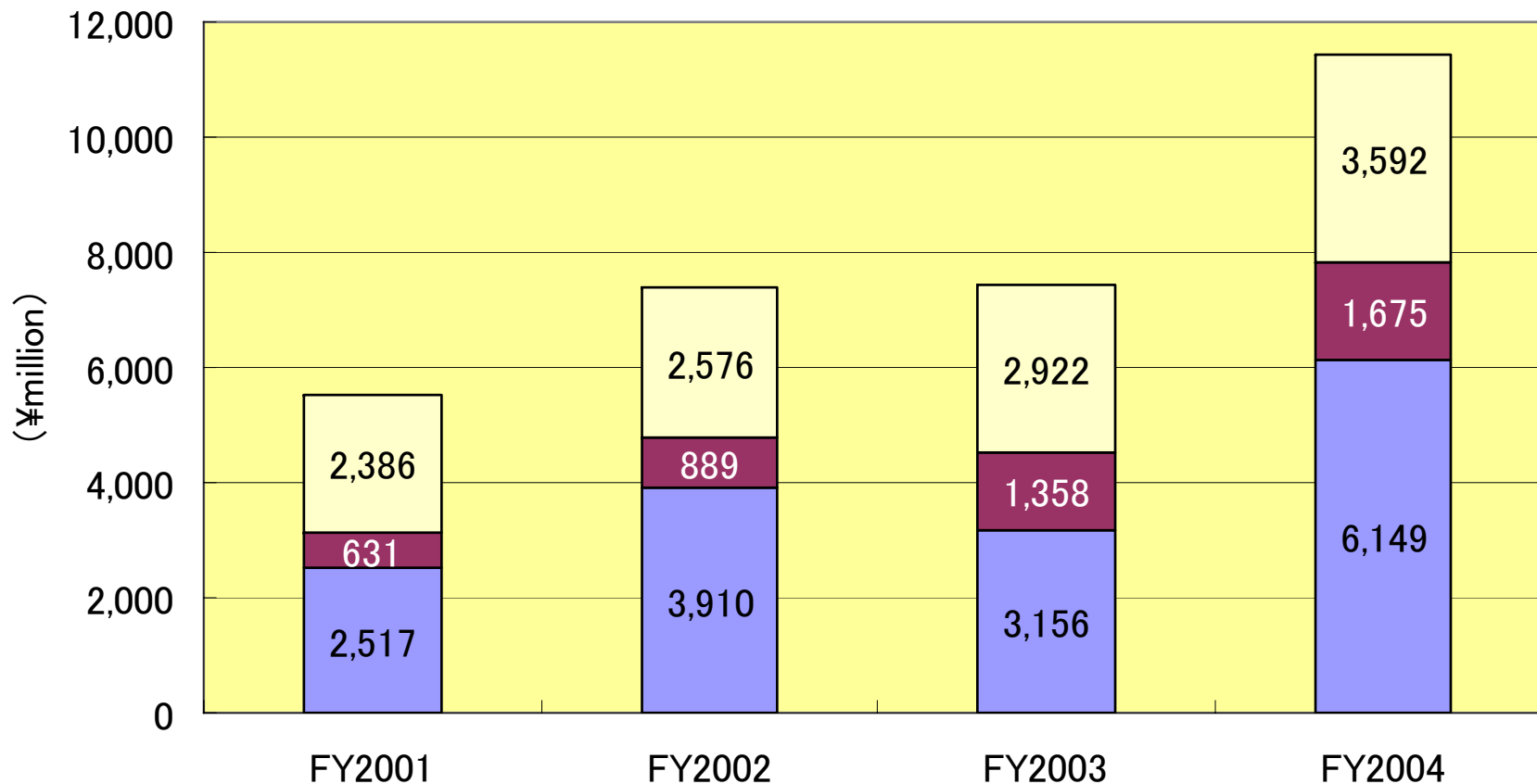
■ External research grant and fund (FY2004: billion)



- Grant-in-aid for scientific research
- external fund from company
- other competitive fund

Income by promoting IUGC* (FY2001-2004)

■ Contract Research ■ Joint Research □ Donation



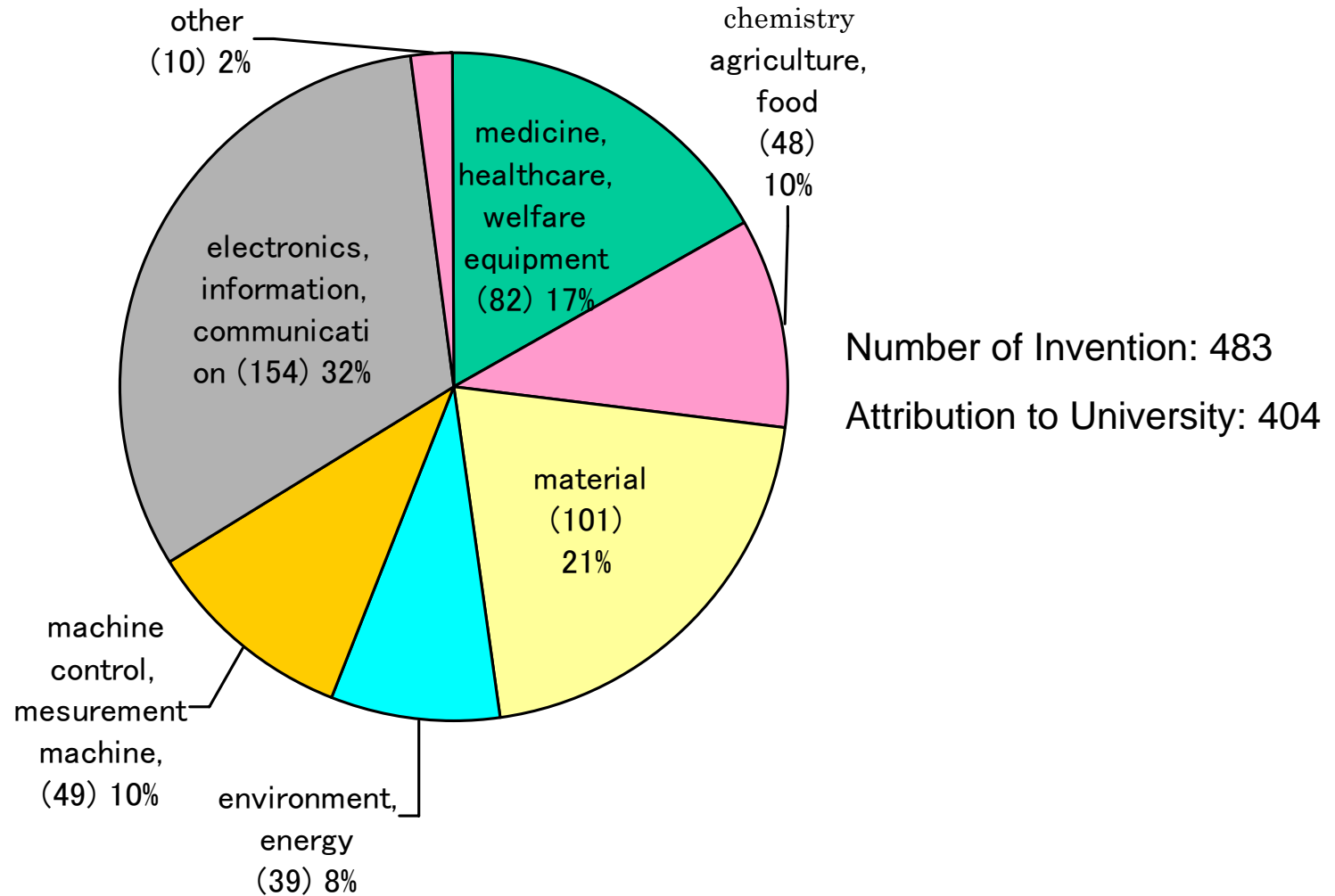
IPR Policy and Rules

Employment Regulations: Employee's invention should be assigned to the University.

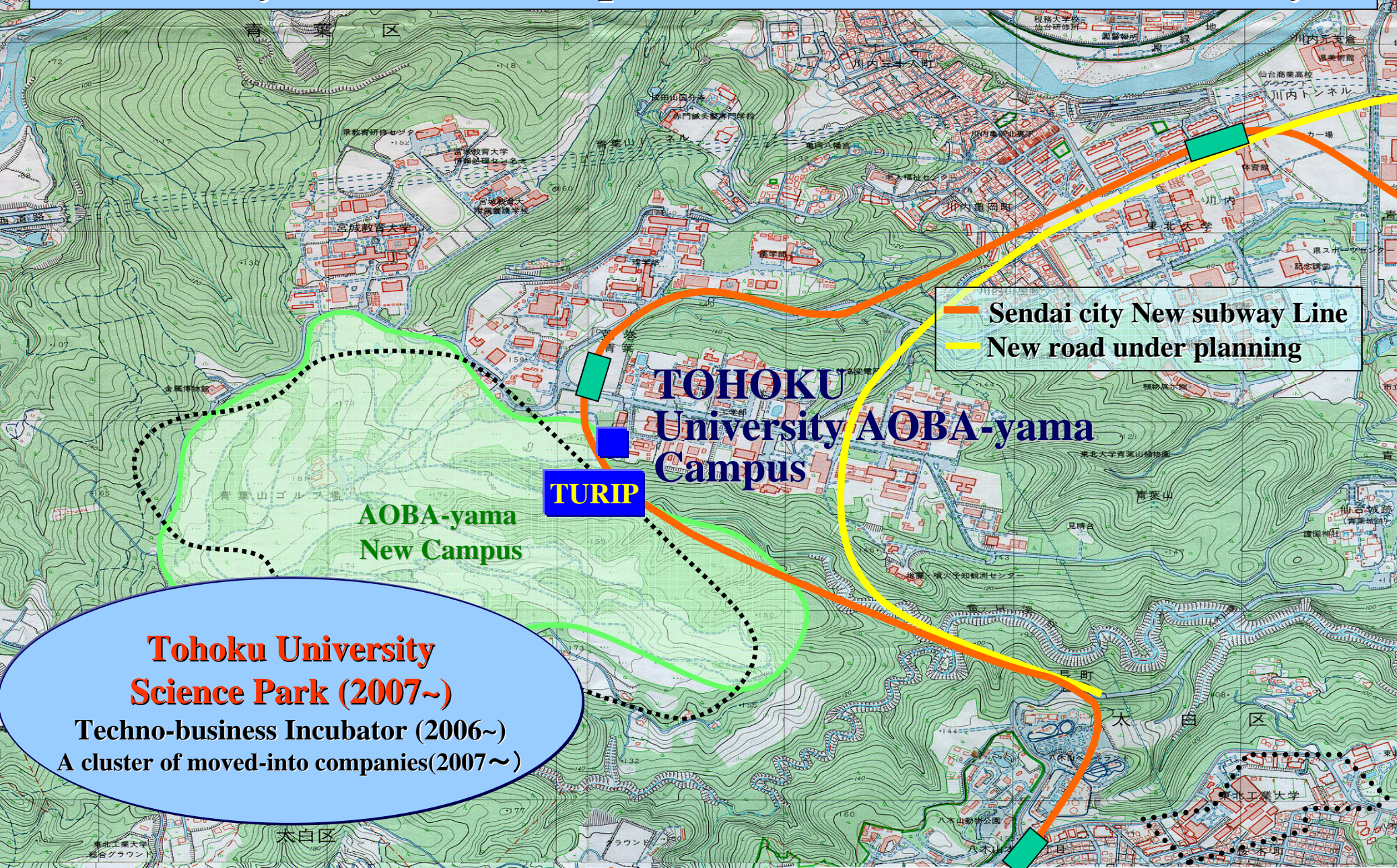
IPR Policy:

1. IPR Committee decides employee's invention and assignment to University.
2. Inventors and the University enter into an assignment agreement of the invention.
3. The University seeks income from IPR and returns it to the inventor.

Categories of invention



AOBA-yama New Campus Plan at TOHOKU University



— Sendai city New subway Line
— New road under planning

TOHOKU
University
Campus

TURIP

AOBA-yama
New Campus

Tohoku University
Science Park (2007~)

Techno-business Incubator (2006~)
A cluster of moved-into companies(2007~)

Thank you very much for your kind
attention to a talk.

T-shimo@bureau.tohoku.ac.jp