

Title (16 pt. Times New Roman Boldface, Upper- and Lower-Case, and Centered over Two Columns)

First AUTHOR*, Second AUTHOR** and Third AUTHOR*,⁺

* Affiliation 1, Address, Zip code, Country.

** Affiliation 2, Address, Zip code, Country.

+ E-mail: <corresponding e-mail address>

Introduction

Clearly explain the nature of the problem, previous work, purpose, and contribution of the paper.

Headings

Title should be 16 pt. Times New Roman Boldface, and upper- and lower-case. Authors' name should be 12 pt. Times New Roman, and upper- and lower-case for the first name and upper-case for the last name. Leave one blank line between them. Affiliation and address of the authors, and e-mail address of the corresponding author should be 10 pt. Times New Roman. Leave one blank line between the authors' name and them. They should be centered spanning the entire page.

Leave two blank lines between the headings and body of the text.

Body of Text

The length of the manuscript MUST be **2, 4, 6 or 8 pages**. For the body of your document, use 10 pt. Times New Roman font, single-spaced. It should be in two columns. Each column is 80 mm in width and fully justified (not only left-justified).

Paper Size

A4 (210 mm by 297 mm, 8.26" by 11.69"). LETTER (8.5" by 11.0" or 21.6 cm by 27.9 cm) will NOT be accepted. Leave 25 mm margins at the top, and 20 mm at the bottom and on the left and right sides.

Text Headings

The primary text headings should be 10 pt. Times New Roman boldface, upper- and lower-case, and centered. The body text must start on the next line (no extra space from the heading to the text).

Subheadings: The secondary headings should be 10 pt. Times New Roman boldface, upper- and lower-case, and flush left with the left margin. The body text must start on the next line (no extra space from the heading to the

text).

The third headings should be 10 pt. Times New Roman boldface, upper- and lower-case, and flush left with the left margin, followed by a colon, a space and its text (no extra space from the last line of the former paragraph to the heading).

Equations

If you need to insert an equation, start a new line and indent as the first line of the paragraphs.

$$\frac{\partial u}{\partial t} + u \frac{\partial u}{\partial x} = -\frac{\partial p}{\partial x} + \frac{1}{\text{Re}} \frac{\partial^2 u}{\partial x^2} \quad (1)$$

It is not necessary to indent the line following an equation.

Figures and Tables

All figures – photographs, graphs, and/or line drawings – and tables should be numbered consecutively and captioned. All callouts within figures and tables should be no smaller than 7 pt. All figures will be printed in grayscale, or black and white. The title or description of the figure or table should be 9 pt. Times New Roman, sentence case (first letter capitalized), and centered.

Conclusion

Clearly indicate advantages, limitations, and possible applications.

Acknowledgements

A brief acknowledgement section may be included between the Conclusion and References (optional). Do NOT include author biographies.

References

References need to be numbered as they appear in your text (^[1], ^[2], ^[3], etc) and should appear in your reference section in numerical order (not alphabetically).

The required format for references is as follows:

(Format for Proceedings Papers)

[1] Shirai, A., Fujita, R., and Hayase, T., Flow simulation of neutrophils in capillary network (Effect of capillary geometry on transit time of cells through network), *Proc. IASTED Int. Conf. Biomed. Eng. (BioMED-2005)*, (2005), 284-289.

Note that the proceedings title is set in italics. Title of the paper is optional.

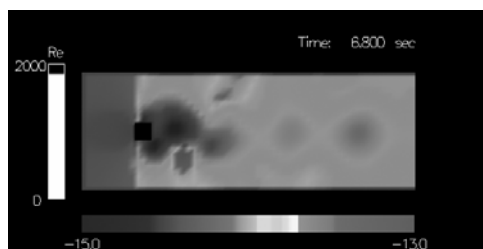


Fig. 1 Visualization result with adaptive colormaps.

(Format for Journal Papers)

[2] Hogg, J.C., McLean, T., Martin, B.A., and Wiggs, B., Erythrocyte transit and neutrophil concentration in dog lung, *J. Appl. Physiol.*, Vol. 65 (1988), 1217-11225.

Note that the journal title is set in italics. Title of the paper is optional.

(Format for Books)

[3] Fung, Y.C., *Biomechanics: Circulation, 2nd Ed.*, (1997), Springer-Verlag, New York.

.Note that the title of the book is in upper and lower case letters and italicized. Place of publication and publisher are given.

Submission

The manuscript must be converted to Adobe PDF format prior to submission. There are numerous ways to accomplish this conversion, including the use of Acrobat Distiller, Acrobat PDF Writer, the public domain software, or other software.

The file name must include your presentation ID and last name of the corresponding author, e.g. if your ID is 2007, the file name should be “2007_shirai.pdf”.

You are required to submit your manuscript electronically **by October 31**. Please visit the website for the detailed information of the symposium.

<http://www.ifs.tohoku.ac.jp/afi-tfi-2007/>