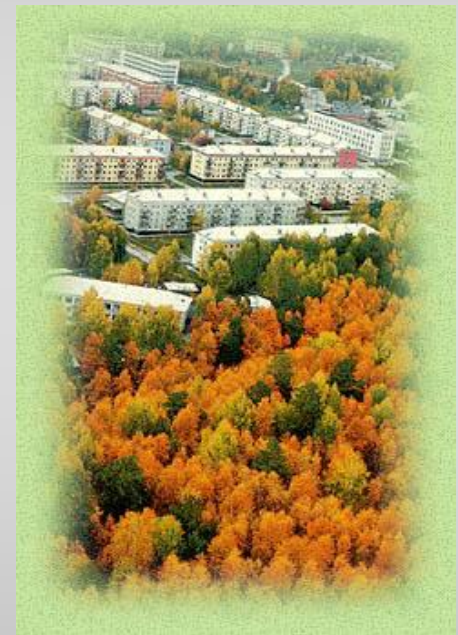


# Siberian Branch of Rus. Ac. Sci. Novosibirsk Scientific Center





# Introduction of Khristianovich Institute of Theoretical and Applied Mechanics, Siberian Branch of Russian Academy of Sciences (Founded in 1957)

## Directors of Institute, Academicians of RAS



**S.A. Khristianovich**  
**(1957-1965)**

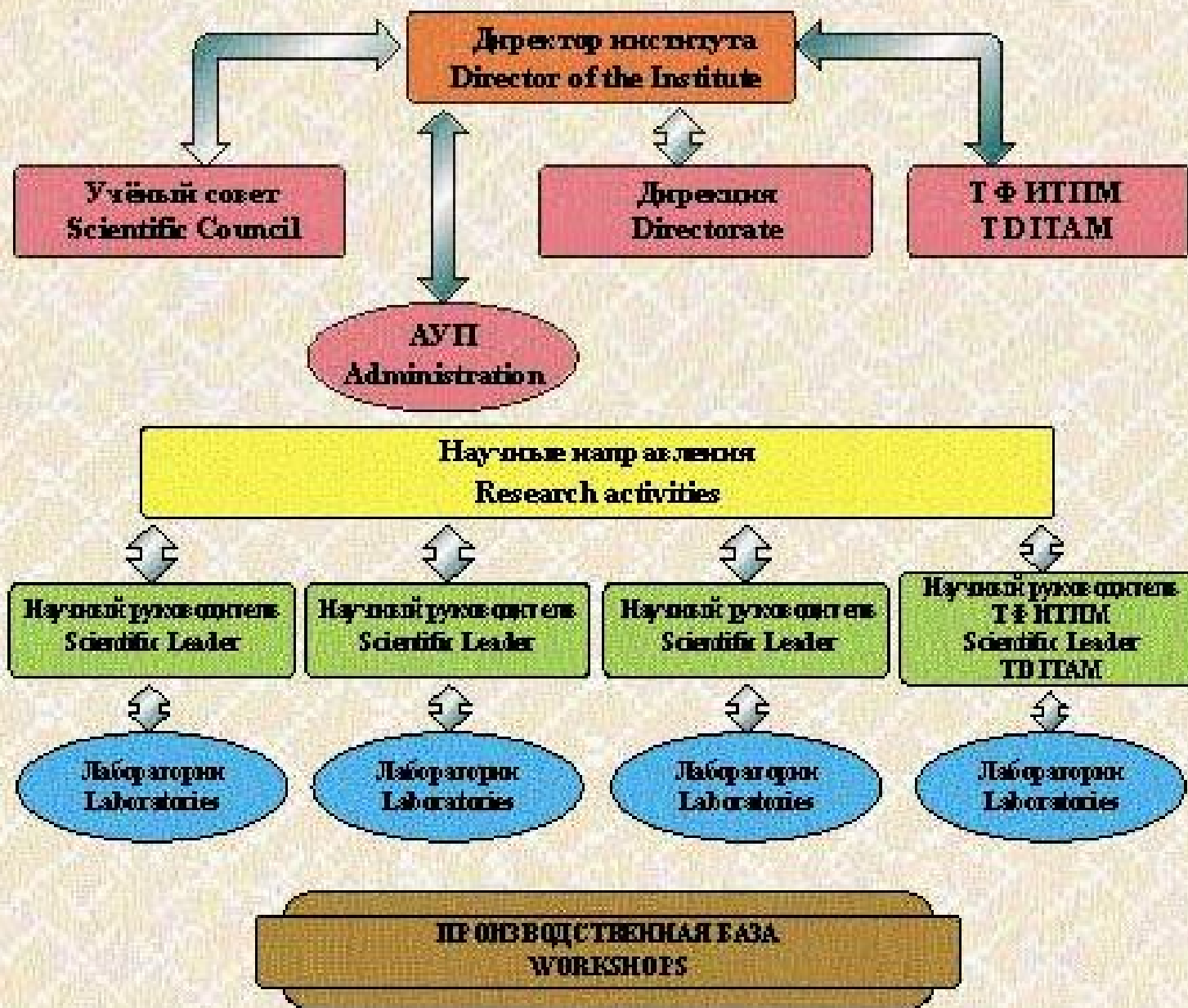


**V.V. Struminsky**  
**(1966-1971)**



**V.M. Fomin**  
**(since 1989 up to date)**

# STRUCTURE OF THE INSTITUTE



# MAIN DIRECTIONS OF RESEARCH ACTIVITIES

- *Mathematical modeling in mechanics*
  - *Aerodynamics*
- *Physical and chemical gas dynamics*

## ITAM SB RAS General Information

*Total number of the employees of ITAM is 520 including:*

- *213 Researchers,*
- *1 Academician of RAS,*
- *54 Doctor of sciences,*
- *110 Candidate of sciences (PhDs)*
  - *320 Engineers and technicians,*
  - *35 PhD students.*

# International Scientific Collaboration of Khristianovich Institute of Theoretical and Applied Mechanics SB RAS

