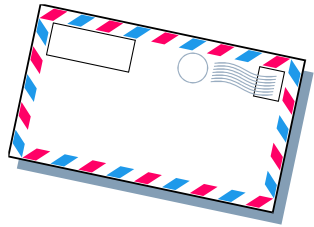
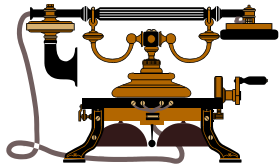


美国《材料研究》月刊主编 (principal editor)  
英国材料学会会士 (Fellow, IOMMM)  
新加坡南洋理工大学机械及宇航工程学院副院长 (研究生教育)



**Prof. Sam Zhang**  
**School of Mechanical & Aerospace Engineering**  
**Nanyang Technological University**  
**50 Nanyang Avenue**  
**Singapore 639798**



*Secretary: 65-6790 6827*  
*Autolink to hand phone: 65-6790 4400*  
*fax. 65-6791 1859*  
*email: [msyzhang@ntu.edu.sg](mailto:msyzhang@ntu.edu.sg)*  
*web: <http://www.ntu.edu.sg/home/msyzhang>*



张善勇教授

## Global Standing:

- **2004:** NTU was ranked 50th globally and 7th in Asia by The Times Higher Education Supplement in a ranking of 200 best universities worldwide.
- **2005:** NTU was ranked 48th globally by The Times Higher Education Supplement in a ranking of the world's best universities and placed 26th among technology universities.
- **2006:** NTU advanced 11 positions to 15th place in the global league of technology universities, according to the Times Higher Education Supplement.
- **2007:** NTU was ranked among the top 25 technology universities in the world by the Times Higher Education Supplement.



<u>Established</u>	<b><u>1955</u></b>
<u>Faculty</u>	<b>1,100</b>
<u>Total Faculty and Staff</u>	<b>3,739</b>
<u>Undergraduates</u>	<b>21,097</b>
<u>Postgraduates</u>	<b>9,425</b>

# 机械与宇航工程学院

Mechanical  
& Aerospace  
Engineering

材料科学  
与工程  
学院

Materials  
Science &  
Engineering

化学与生物  
医学工程  
学院

Chemical &  
Biomedical  
Engineering

COLLEGE OF  
ENGINEERING

电机与  
电子  
工程学院

Electrical  
& Electronic  
Engineering

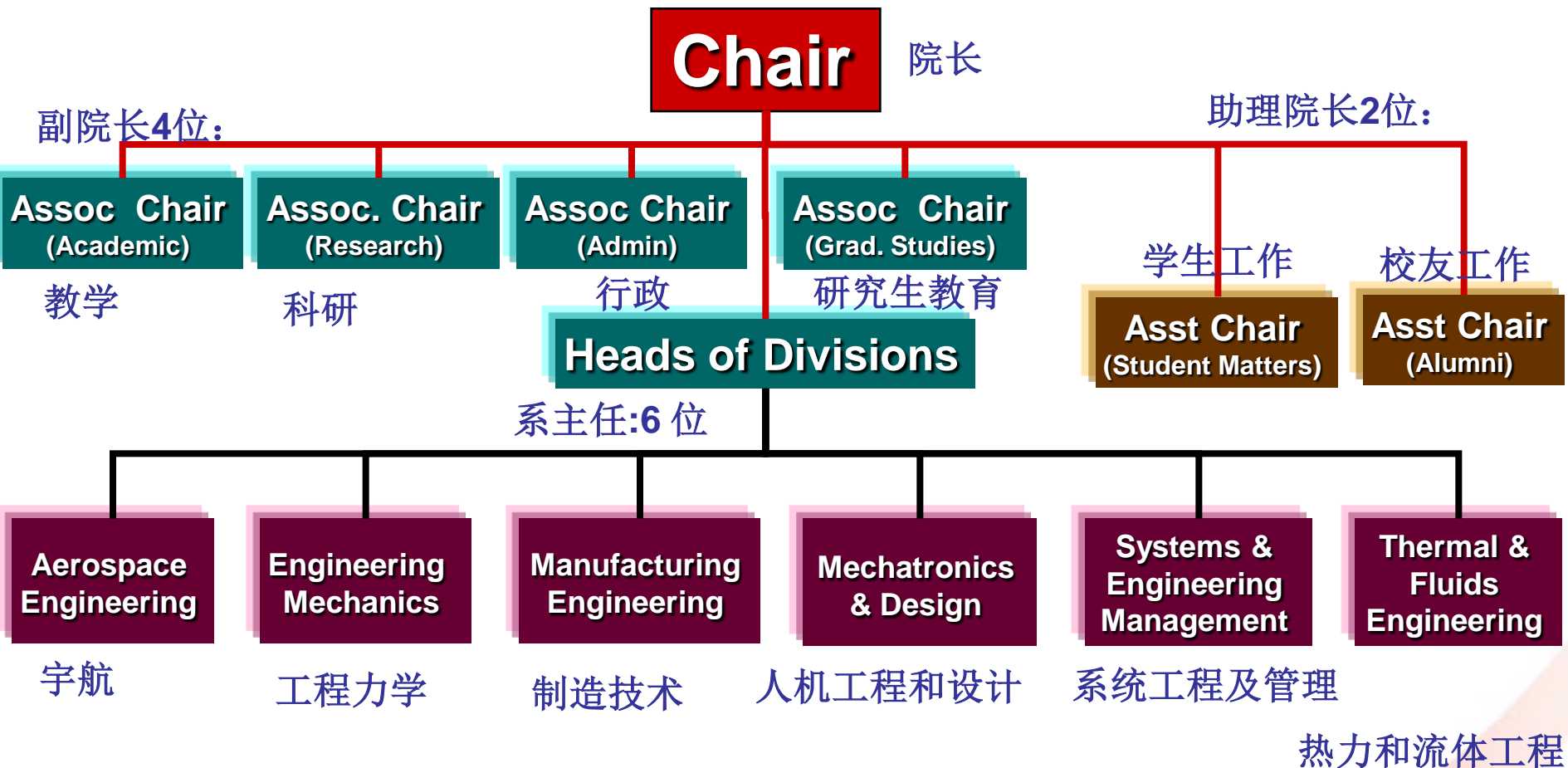
土木与环境  
工程学院

Civil &  
Environmental  
Engineering

Computer Engineering

计算机工程学院

# 机械与宇航工程学院组织结构



# School Statistics

## Staff

Academic Staff = 148 教学人员  
Admin Staff = 42 行政人员  
Technical Staff = 97 技术人员  
Research Staff = 104 全职研究人员

## Students

BEng(Mech)	2,312
BEng(Aero)	383
MSc	613
MEng (by research)	74
PhD	307

## Alumni

BEng(Mech)	11,694
MSc	1,910
MEng	345
PhD	547

# Undergraduate Programmes

## 本科教育

- Bachelor of Engineering (Mechanical Engineering)

机械工程学士学位

- Bachelor of Engineering (Aerospace Engineering)

宇航工程学士学位

- Double Degree:

- BEng(Mech&Econ) 机械与经济双学士学位

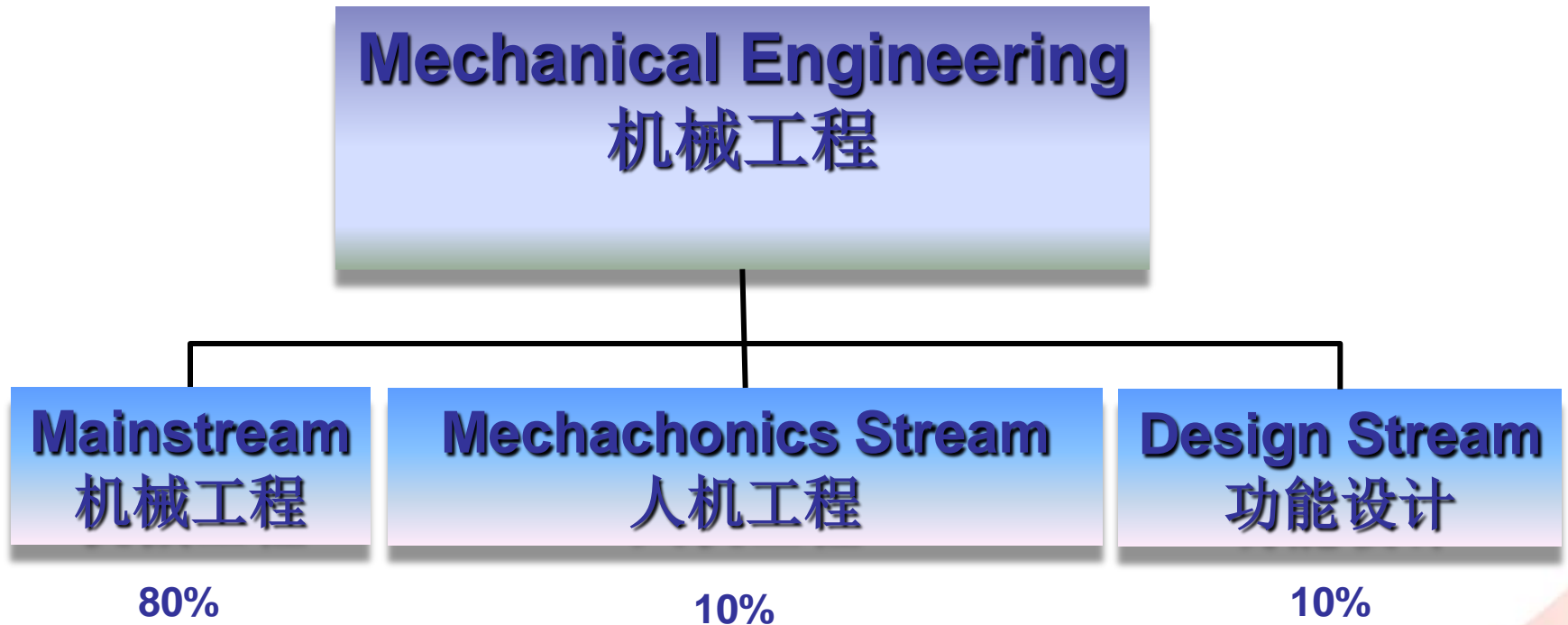
- BEng(Aero&Econ) 宇航与经济双学士学位

- 80% Singaporean

- 20% international students

- Majority of international students are from China, Malaysia, India and Indonesia

# 机械工程的三大专业方向



# Undergrad specialization 本科专业设置

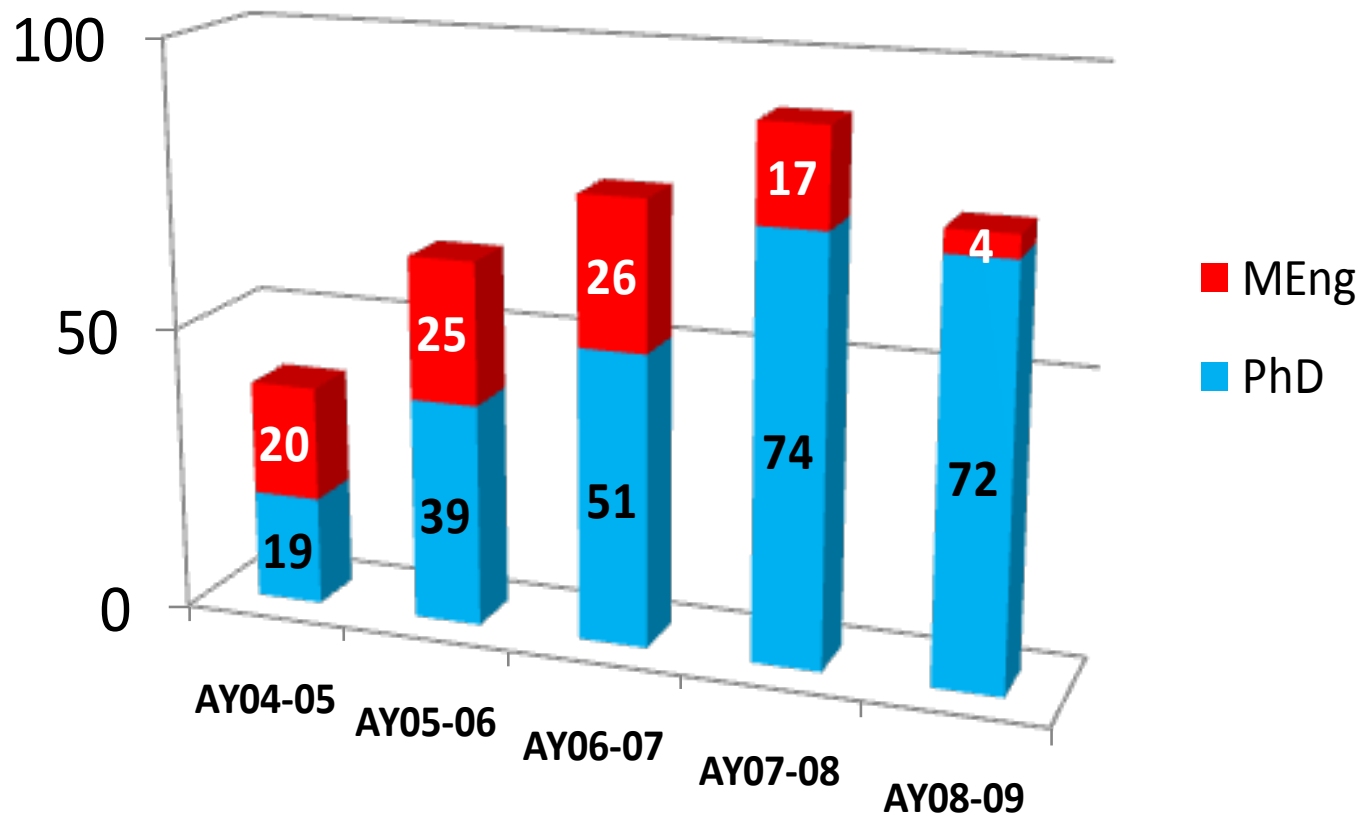




# Graduate Education 研究生教育

- Master of Science (MSc) (by course and dissertation)
- Master of Engineering (by research)
- PhD (by research)

# 宇航与机械工程学院研究生新生



PhD intake of 72 for AY08-09 as shown is only for Semester 1

# MEng/PhD (By Research)

