

***Introduction to
Sungkyunkwan University
College of Engineering
KOREA***

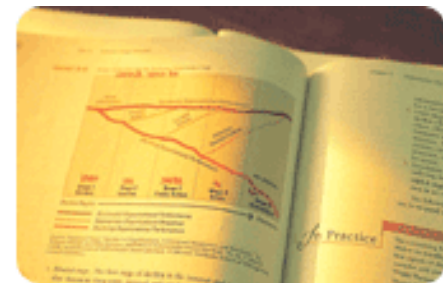
*Sung-Jin Song
School of Mechanical Engineering
Sungkyunkwan University*



Key Events in the History of SKKU

Unique Origin – Since 1398

1398	Sungkyunkwan founded as the first national education institute during the Lee Dynasty
1895	Sungkyunkwan reformed as a modern three –year university
1946	Sungkyunkwan College opened in Seoul
1965	College of Sciences and Engineering is established
1978	Natural Sciences Campus opened in Suwon
1980	College of Engineering is established
1996	Samsung Group joined as a foundation
1998	The 600 th Anniversary



Two campuses

- Faculty : 1,119
- Staffs: 411
- Students : 25,064
 - Undergraduate: 18,703
 - Master/Ph.D: 5,399/962
- Annual Budget : US\$536M

⊕ Humanities and Social Sciences Campus (Seoul)

- College of Humanities
- College of Law
- College of Education
- School of Confucian and Oriental Studies
- School of Human Life Science
- School of Social Sciences
- School of Economics
- School of Business Administration
- School of Art



⊕ Natural Sciences Campus (Suwon)

- College of Medicine
- **College of Engineering**
- School of Information and Communication Engineering
- School of Life Science and Natural Resources
- School of Sport Science
- School of Natural Sciences
- School of Pharmacy



College of Engineering

	Major	Professors	Undergraduate	Graduate
College of Engineering	Chemical Engineering	18	463	93
	Polymer Science & Engineering	7	128	53
	Textile System Engineering	5	41	
	Advanced Materials Science & Engineering	22	554	141
	Mechanical Engineering	32	766	137
	Architecture	11	228	34
	Architectural Engineering	8	184	93
	Civil & Environmental Engineering	12	192	
	Landscape Architecture	5	94	13
	Systems Management Engineering	16	362	51
	Management of Technology			101
	Interdisciplinary Programs			24
	Total	136	3,012	740

Research Institutes & BK21 Project

Research Institutes

- Advanced Materials Technology Research Center
- Center for Quality and Innovation
- Construction and Environmental Research Center
- Institute of Advanced Machinery and Technology
- Polymer Technology Institute
- Zero Emission Center
- **Safety and Structural Integrity Research Center**

BK21 Project (Supported by the Ministry of Education, Science and Technology, Korean Government)

- Center for Advanced IT HRD with Close Industry Cooperation
- Fusion Technology of Environment & Energy
- Center for Next-generation IT Materials and Components
- Center for Convergence Mechanical System Design
- Center for Ubiquitous City Construction
- Polymeric Materials for Growth Engine of Korea in Next Generation
- Research&HRD Group for Management of Complex Systems

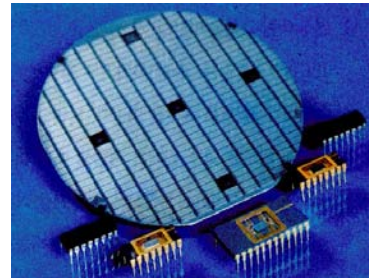
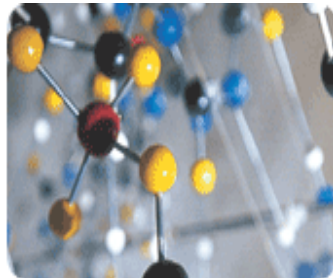
SAFE (SAFETY AND STRUCTURAL INTEGRITY RESEARCH CENTER)

- Established in June 1997
- Engineering Research Center (ERC) designed by the Korea Science and Engineering Foundation (KOSEF)
- Objective : Development of advanced safety evaluation technologies for industrial facilities such as power plants, petrochemical plants and pipelines
- Research Area
 - Nondestructive Evaluation
 - Material Degradation
 - Structural Analysis
 - Structural Integrity Evaluation



Unique Future

- A very special partnership with the Samsung Group under which Samsung provides large funding, custom education requirements, and university management (Since 1996).
- Tremendous progress during the past decade on education, research, finances, infrastructure, and university management.
- Vision 2010 for the next step towards SKKU's Unique Future



VISION 2010⁺

Global 100
University

Global
Competitiveness
in Education
Programs

World-Class
Research Institute