

Tohoku University Recovery

from the Great East Japan Earthquake



Q1 How much damage did Tohoku University suffer from the disaster?

A1 90% of our buildings were not damaged.

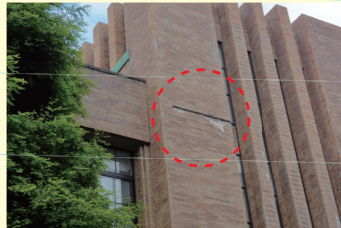
Almost no buildings collapsed in the center of Sendai city. Utilities such as electric, gas and water supplies were damaged, but have been repaired.

Inspection results for Tohoku University buildings

Unsafe: 28 buildings (About 4.7%)
Entry Restricted: 48 buildings (About 8.2%)
Confirmed Safe: 512 buildings (About 87.1%)

Facilities and equipment

Approximately 4,000 incidents of damage to facilities and equipment were found.



Some bricks fell off the General Affairs building.



Tohoku University Centennial Hall is in danger of collapsing.

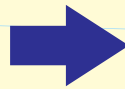
Q2 What's the status of the restoration and reconstruction at Tohoku University?

A2 We have recovered enough to operate our education and research activities almost as usual.

Facilities and equipment which were undamaged are being shared among users whose facilities and equipment were damaged. In addition, we have asked the government to set a budget for reconstruction and a flexible system of budget implementation promptly. We are not only recovering our education and research environments, but also taking the disaster as an opportunity to improve them more than ever.



After the earthquake



After restoration

Due to the disaster, each faculty held its own entrance ceremony on May 6th. On the next day, the Freshman Orientation was held at Kawauchi campus, and classes started on May 9th. Our education and research activities have resumed.



Each faculty held its own entrance ceremony (School of medicine) (May 2011)



Lecture (June 2011)



Research activity (June 2011)

Q3 Are there any problems with daily life in Sendai?

A3 Daily life goes on as usual in the Sendai city center.

In the areas of Sendai where Tohoku University campuses are located, damage from the disaster was light. Now utilities, the living environment (ex. apartments, hotels), and traffic environment, including public transportation, have been repaired. We can live our lives as usual.

Information about daily life (from the Miyagi Prefectural Government website)

<http://www.pref.miyagi.jp/li.htm>

Information about Sendai City Promotion (from the Sendai city website)

<http://www.city.sendai.jp/kikaku/kokusai/english/index.html>



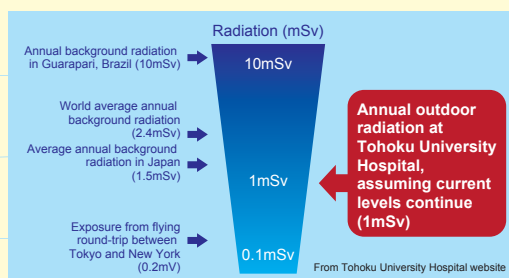
Sendai City view (June 2011)

Q4 What effect does radiation have on Sendai city?

A4 Now the radiation level in Sendai is less than half of the world average.

According to measurements in Sendai city (at Aoba, Aoba-ku, Sendai), where Tohoku University is located, the radiation level is approximately 0.09-0.10 $\mu\text{Sv/h}$, as measured on May 17th. This value is the same as that in Shinjuku, Tokyo and 1.5-2.0 times higher than usual. This value is regarded as "having no effect on human health".

In addition, tap water and vegetables in Miyagi prefecture are being monitored. So far, no values exceeding standards have been measured.



Radiation Monitoring by Tohoku University <http://www.bureau.tohoku.ac.jp/anzen/monitoring/english.html>

Radiation dosage measured in Miyagi Prefecture http://www.pref.miyagi.jp/kokusai/en/accidents_fukushima_nuclear.htm

Q5 How is Tohoku University contributing to afflicted areas?

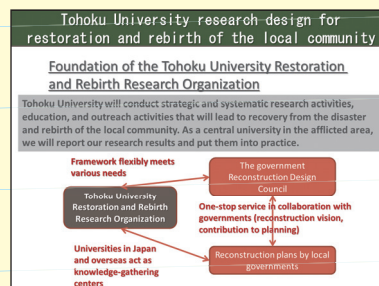
A5 Students and staff members are contributing in various ways.

Staff members from the Tohoku University Hospital and School of Medicine have devoted themselves to providing medical services in afflicted areas since March 11th. Student volunteers have also contributed to afflicted areas in various ways.

Tohoku University founded the Tohoku University Restoration and Rebirth Research Organization in order to conduct strategic and systematic research activities, education, and outreach activities that will lead to recovery from the disaster and rebirth of the local community. As a central university in the afflicted area, we will report our research results and put them into practice.



Activities by student volunteers



Activities by the Graduate School of Medicine <http://www.med.tohoku.ac.jp/english/emg/>

Disaster countermeasures by Tohoku University Hospital <http://www.hosp.tohoku.ac.jp/release/index.php?e=558>

Activities by the "HARU" student volunteer group <http://tohokugakuseifukko-e.blogspot.com/>