

Sixteenth International Conference on Flow Dynamics

OS17: Liaison Office Session

Sixteenth Liaison office meeting/session

13:10-15:20, November 7, 2019

@ Room EX-1, Sendai International Center



TOHOKU
UNIVERSITY

Internationalization of University and the Role of Liaison Office

Toshiyuki TAKAGI

Institute of Fluid Science, Tohoku University

ELyTMax UMI 3757, CNRS – Université de Lyon –

Tohoku University, International Joint Unit

takagi@ifs.tohoku.ac.jp



1st Liaison Office Meeting, INSA-Lyon (January 26, 2005)



Present: Jean-Claude Bureau (INSA), Jean-Yve Cavaille, (INSA), K. V. Rao (KTH, Sweden), Hiroshi Higuchi (Syracuse Univ.), Hyun Dong Shin (KAIST), In Lee (KAIST), Alexandre Vasil'ev (Moscow State Univ.), Kaori Yuse (INSA), Masud Behnia (UNSW & Sydney Univ.), Toshiyuki Ikohagi (Tohoku Univ.), Toshiyuki Takagi (Tohoku Univ.), Toshiyuki Hayase (Tohoku Univ.), Jinhao Qiu (Tohoku Univ.)

Contents

1. Introduction

University Internationalization and Globalization

2. Before and after the ISRE2000

Change of system in education and research

What is ISRE2000?

Proposal by communiqué and declaration

3. Mission and role of Liaison offices

Establishment of liaison offices

Achievements of liaison offices

4. Summary

Contents

1. Introduction

University Internationalization and Globalization

2. Before and after the ISRE2000

Change of system in education and research

What is ISRE2000?

Proposal by communiqué and declaration

3. Mission and role of Liaison offices

Establishment of liaison offices

Achievements of liaison offices

4. Summary

Internationalization and Globalization

- Internationalization

Exchanges among countries based on geographical and/or sovereign national units assuming the premise of the existence of nations and ethnic groups

- Globalization

Establishment of the standards that are globally valid across the world and integrated across nationals and borders

Two types of internationalization

1. **Internationalize as "a transitive verb(他動詞)"**
 1. Pax Britannica, Pax Americana
 2. Clarify the existence of acting side
 3. You or your country is the only actor that works, not the affected side
2. **Internationalize as "an intransitive verb(自動詞)"**
 1. Internationalization is the process of “the change of oneself”
 2. Being a part of the international communities, you or your country becomes an internationally accepted one
 3. International student policy as an external support (Japan)

Dynamic changes of Internationalization of Universities in Japan

- Up to 1980
 - Internationalization indicator: whether a university has “international education speciality or not”
- After 1980
 - Change of “education system / function”
- 1990s
 - Activity approach
- 2000s
 - Strategic approach

What is “Internationalization of University”?

- Framework establishment of global standardization of university system
 - The process of university transformation and reorganization to adapt the global society
 - An integrated process not only to educational and research standards but also to systems and management

Contents

1. Introduction

University Internationalization and Globalization

2. **Before and after the ISRE2000**

Change of system in education and research

What is ISRE2000?

Proposal by communiqué and declaration

3. Mission and role of Liaison offices

Establishment of liaison offices

Achievements of liaison offices

4. Summary

2000

ISRE2000

<http://www.eng.tohoku.ac.jp/ISRE2000/>

**International Symposium on Research and
Education in the 21st Century:
The Role of Inter-University Academic and Student Exchange**

**August 18-25, 2000
Sendai, Japan**

Two Questions in ISRE2000

Toward the 21st century,

1. How universities in a new era with innovative development of IT will build and develop academic and educational cooperation systems?
2. What role Tohoku University should play?

- Participants
 - Academic meetings of 90 university presidents or representatives from 39 countries with academic exchange agreements
 - Plenary meeting and 76 individual symposiums with 4200 participants
 - Citizen forum with 350 people
- Communiqué and Declaration
 - Communiqué of the Sendai Executive Forum on Inter-University Exchange
 - Tohoku University Declaration

Tohoku University Declaration

1. A New Era of Inter-University International Exchange Agreements
2. Active Participation in International University Consortia
3. Active Role in Information Technology Network Systems
4. Expansion and Strengthening of International Cooperation in Research
5. Development of International Research Strategies
6. Expansion of Student Exchange and Educational Enrichment
7. *Development of Overseas Liaison Offices*

Contents

1. Introduction

University Internationalization and Globalization

2. Before and after the ISRE2000

Change of system in education and research

What is ISRE2000?

Proposal by communiqué and declaration

3. **Mission and role of Liaison offices**

Establishment of liaison offices

Achievements of liaison offices

Liaison offices at Moscow and Lyon

4. Summary

International Exchange Activity Policy

Strengthen international multi-networks by effective use of overseas academic liaison offices and develop international association networks for flow dynamics with IFS as the core.

Implement internationally recognized first-class research and foster world-class students and young researchers at home and overseas using these networks.

Mission and roles of mutual liaison offices

(1) Information collection and contact points

- (1) Gathering information on research and education
- (2) Contact of researchers, students, staffs
- (3) Alumni and other contact points

(2) Joint research

- (1) Research exchanges such as seminars and workshops
- (2) International projects
- (3) Industry-academia collaborations

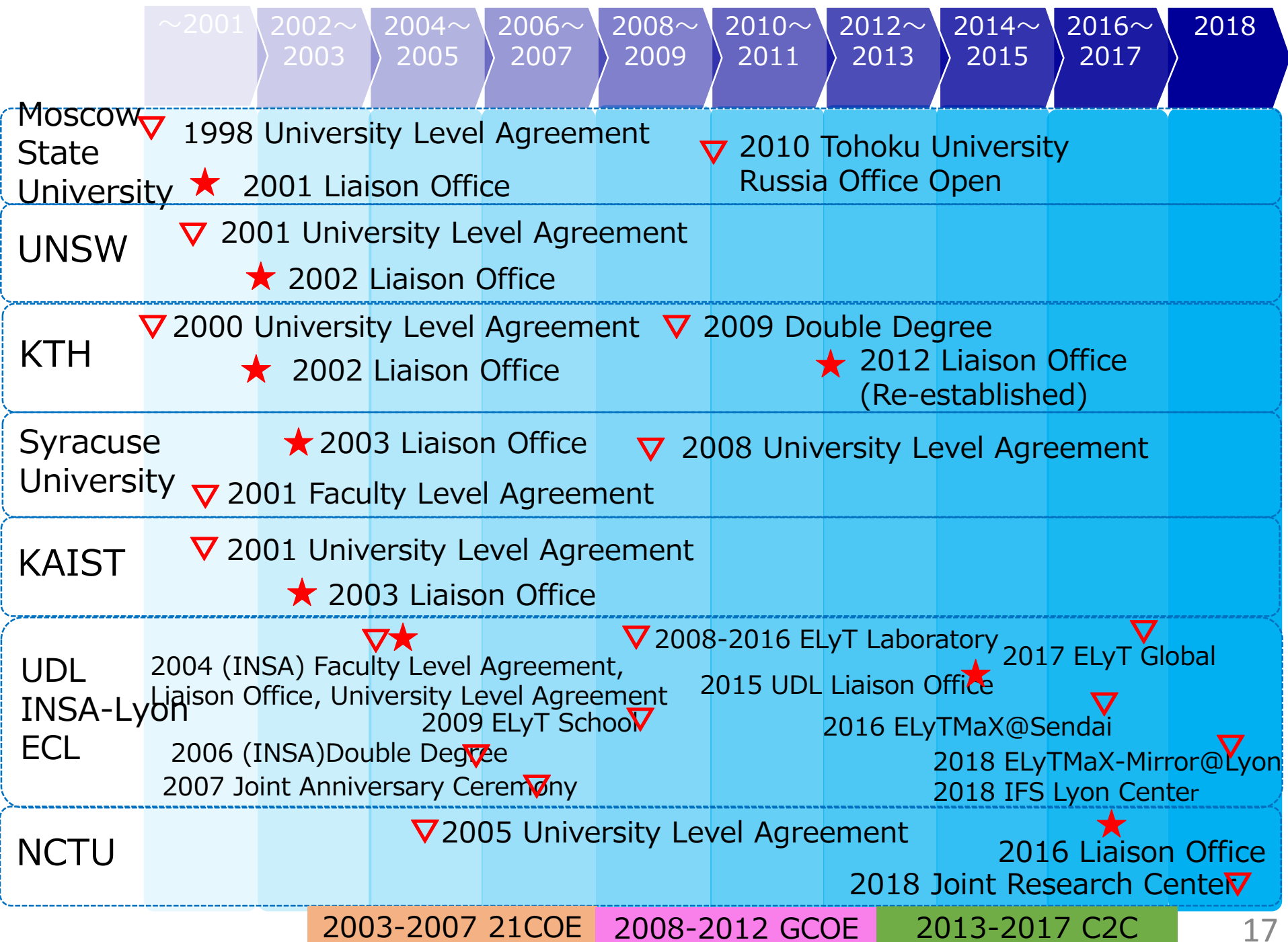
(3) Joint education

- (1) Summer school and lectures
- (2) Internships and double degrees

(4) Support before and during the visit

- (1) Visa acquisition, residence
- (2) Support of the stay

(5) Exchange with overseas bases of other organizations (JSPS, CNRS, NSF, etc.)

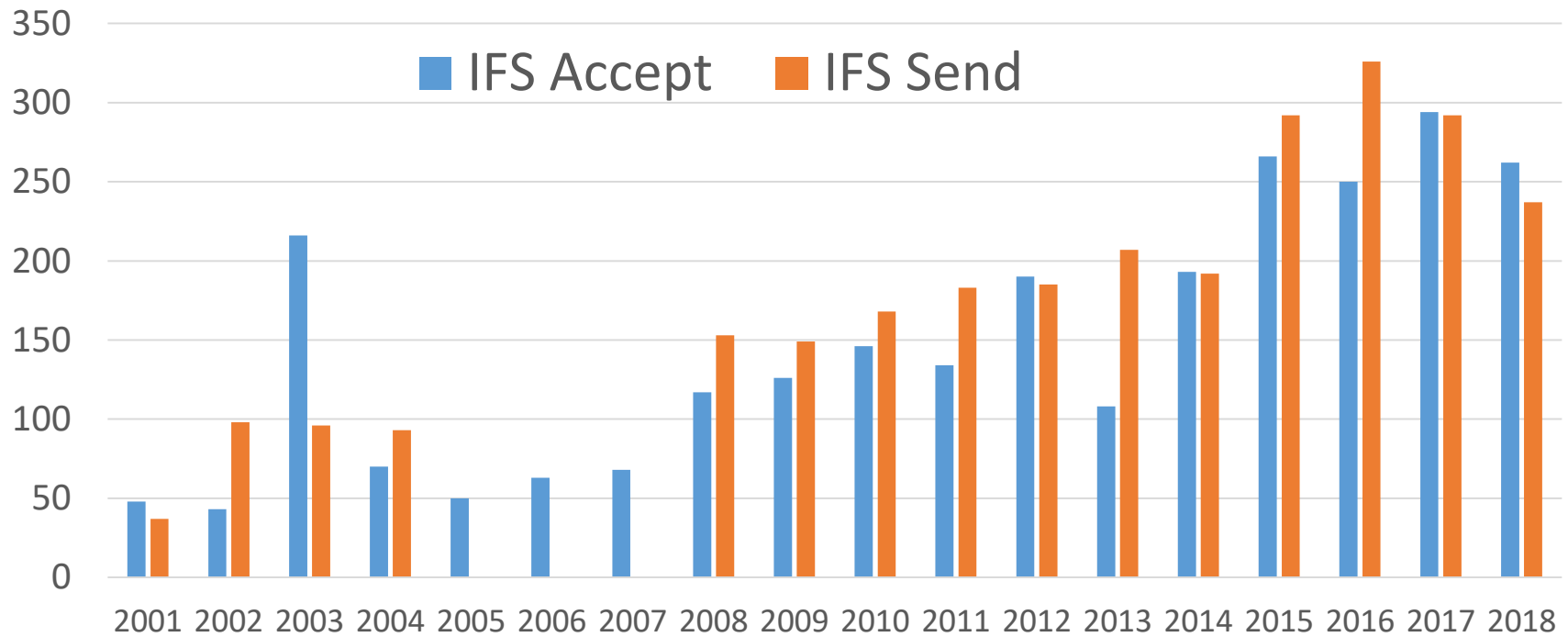


Number of Researcher Exchanges in Tohoku University (Liaison Office Institutions)

		2003	2004	2005	2006	2007	2008	2009	2010	2011	2012	2013	2014	2015	2016	2017	2018
Moscow State Univ.	send	1	5	1	0	3	6	5	29	36	36	47	31	22	28	18	14
	accept	9	8	4	0	0	3	7	5	10	4	4	8	12	11	8	6
UNSW& Sydney Univ.	send	12	8	14	17	14	33	34	42	52	30	15	44	25	40	39	21
	accept	7	7	10	7	11	19	20	14	13	11	14	8	17	11	6	12
KTH	send	1	3	2	7	50	22	9	8	30	16	24	11	19	11	7	1
	accept	5	8	9	8	12	10	10	4	3	2	12	9	7	5	6	4
Syracuse Univ.	send	26	1	7	0	0	2	12	2	4	4	0	0	1	6	2	1
	accept	3	12	0	1	8	3	2	1	3	1	2	1	2	5	5	4
KAIST	send	43	2	3	11	11	3	1	22	27	12	15	7	4	15	12	7
	accept	11	47	14	6	14	16	3	15	5	10	16	19	14	8	16	8
INSA-Lyon, ECL	send	11	42	47	58	13	51	51	19	93	23	54	40	✖ 108	61	125	102
	accept	9	13	10	10	10	55	23	49	19	56	20	65	56	86	37	61
NCTU	Send															27	38
	accept															47	26
Total	Send	94	61	74	93	91	117	112	122	242	120	155	133	179	161	203	184
	accept	44	95	47	32	55	106	65	88	53	84	68	110	108	126	78	121

✱expanded to University of Lyon from 2015

IFS Researcher Exchanges



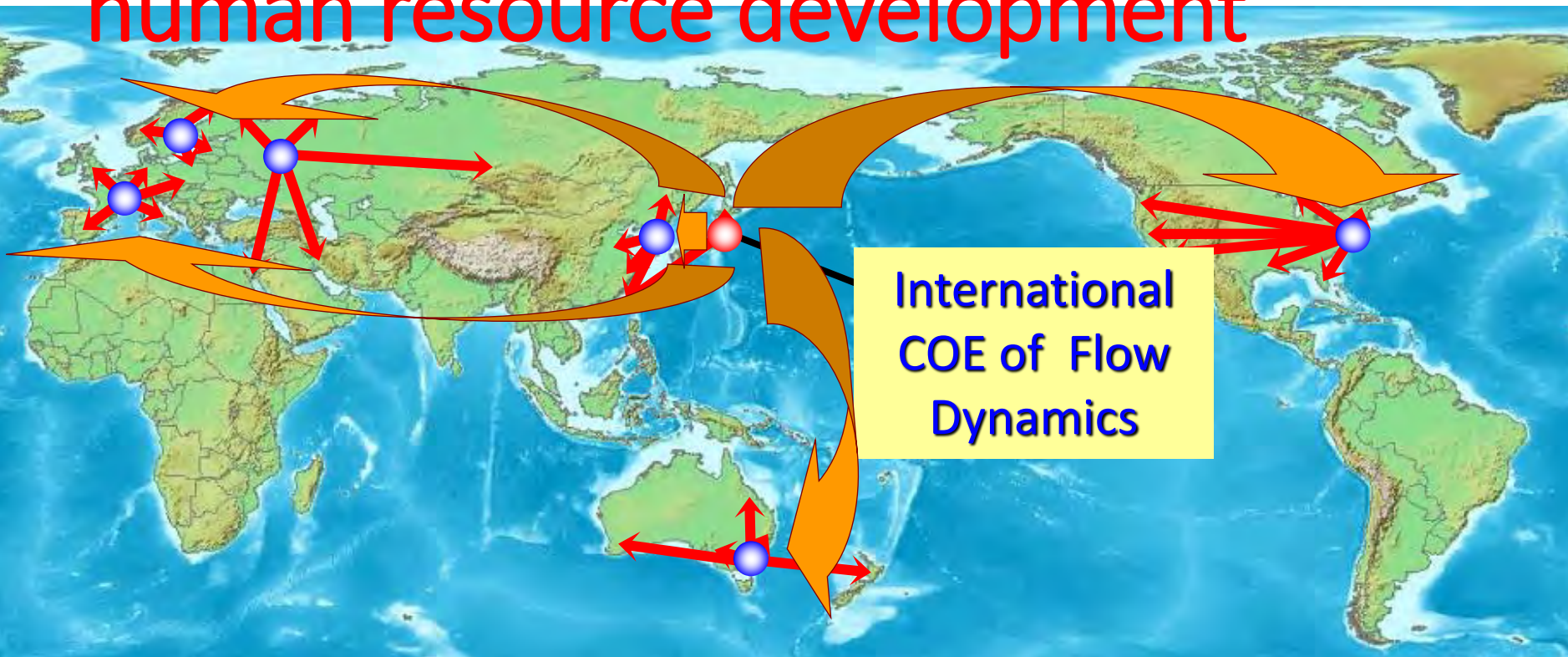
21COE&GCOE																		
C2C																		
IFS Collaborative Research Project																		
ELyT WS & School								JP	FR	JP	JP	FR	JP	FR	JP	FR	JP	FR

ICFD (2004-2013)

GCORE (2013-2018)

Globally leading human resource development

21COE Presentation
(2003-2007)



Masamune Date

● Mutual liaison offices

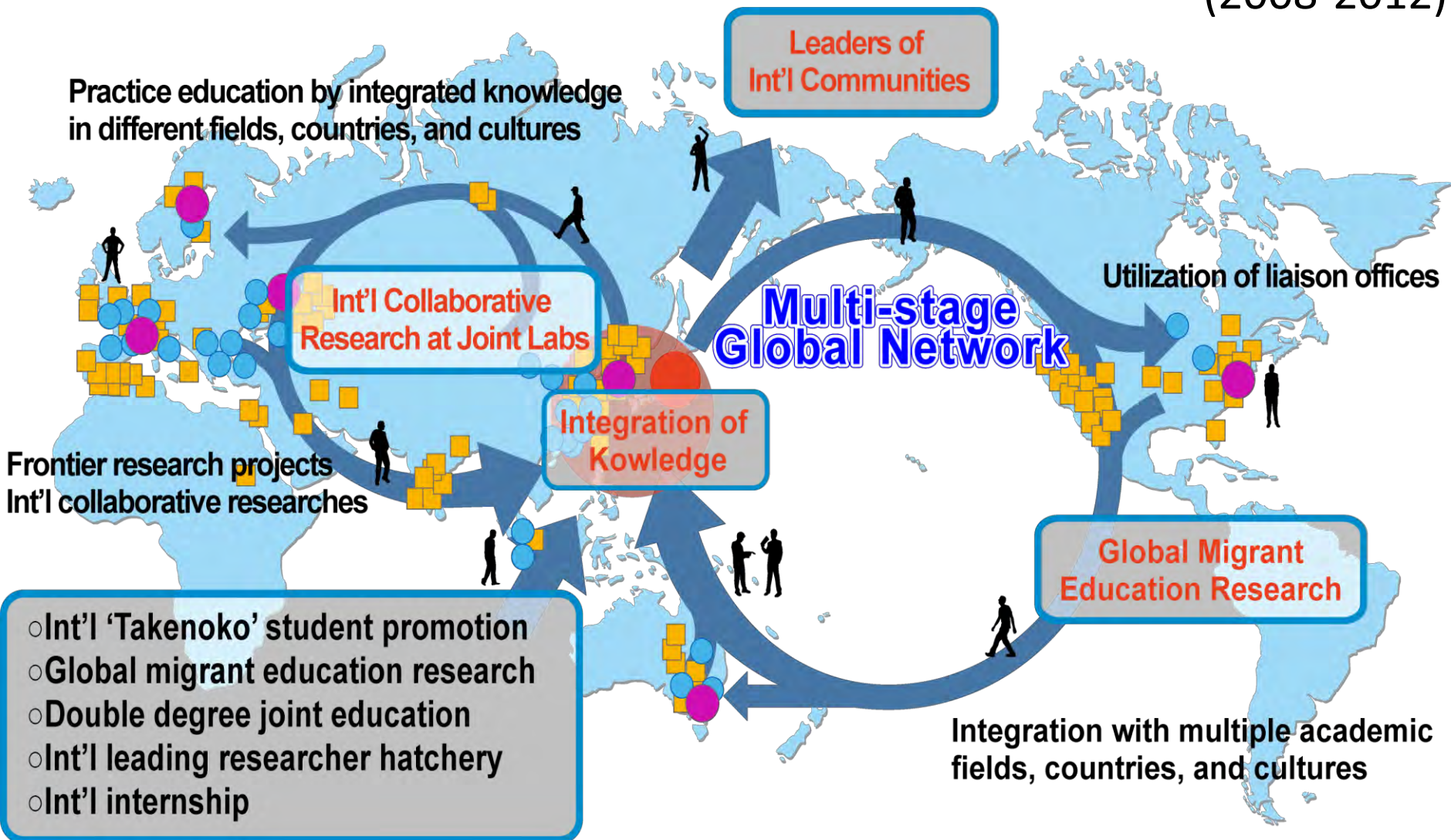
- ◆ Diverse values
- ◆ Pioneering spirit and foresight
- ◆ Practice-oriented spirit



Tsunenaga Hasekura

Education and Research Programs

GCOE
Presentation
(2008-2012)



● : Int'l liaison offices ● : Interdepartment / University agreements ■ : Int'l collaborative research

Development of Research Network

Core Initiation

JSPS Inter-Research Centers Cooperative Program (2003-2006)

Intelligent Materials System for Biomedical Application and Structure Maintenance

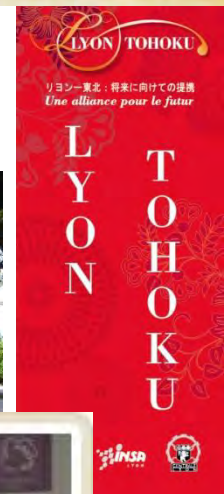
Initiation of research network on intelligent materials system among Japan, France and China



ELyT (CNRS, LIA 2008-)

Inter-university project covering

- (B) Biosciences & Engineering
- (R) Durability, Reliability in Energy and Transportation
- (M) Nano & Micro Scale Materials & Devices
- (F) Flow Dynamics
- (T) Tribology



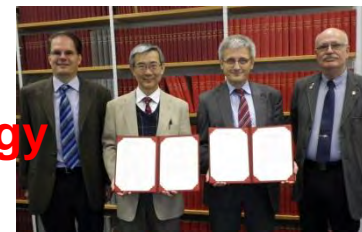
Core Growth and Diversity

Focus and Acceleration

JSPS C2C (2013-)

Cooperation with IZFP (2012-)

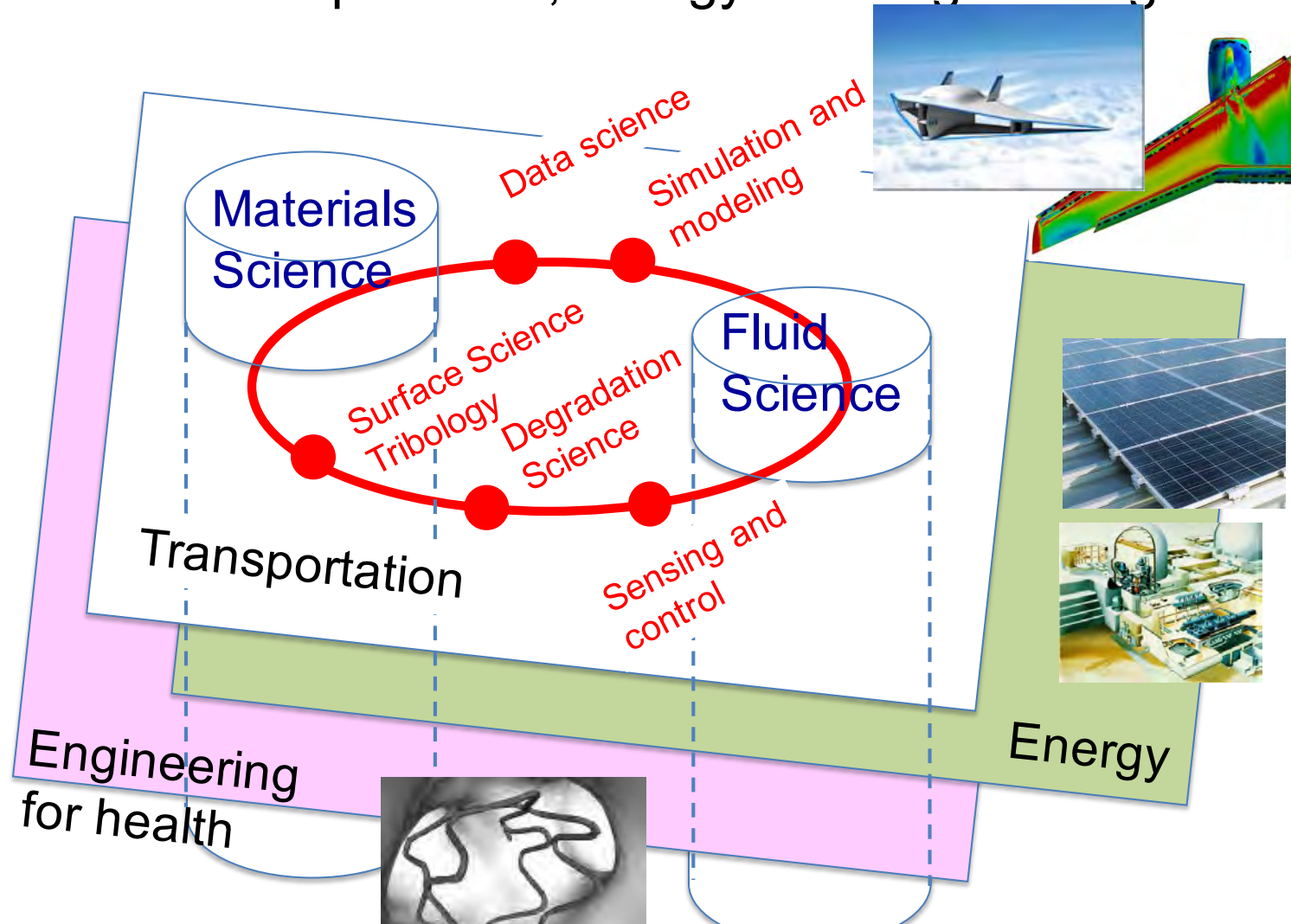
Development of energy-saving technology



Issues that IFS Lyon Center Tackles

Lyon Center
(2018-2021)

Lyon center explores interdisciplinary science based on fluid science and materials science to answer current societal stakes in the fields of transportation, energy and engineering for health.



Contents

1. Introduction

University Internationalization and Globalization

2. Before and after the ISRE2000

Change of system in education and research

What is ISRE2000?

Proposal by communiqué and declaration

3. Mission and role of Liaison offices

Establishment of liaison offices

Achievements of liaison offices

4. **Summary**

Summary

1. The University internationalization is the process of university transformation and reorganization to adapt the global society
2. ISRE2000 answered two questions toward the 21st century. The declaration showed the direction of Tohoku Univ internationalization.
3. IFS established liaison offices in collaboration with partner institutes as a part of the university internationalization process.
4. Industry-academia global collaborations are expected as a role of the liaison offices.

Thank you for your kind attention!

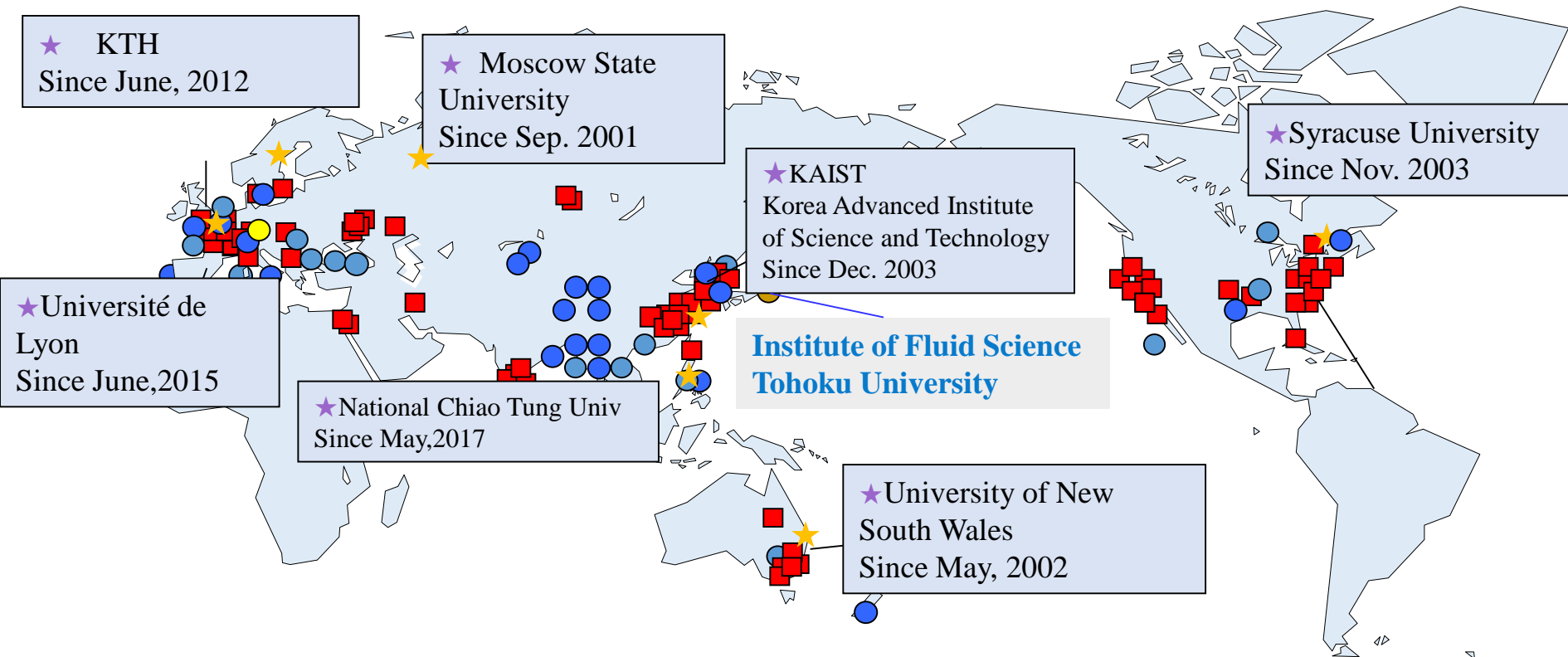
*What will be
the future of
Liaison offices?*

I would like to thank Ms.
Ruriko Azumi of IFS GCORE
for helping with collecting
information and creating
presentation materials.

November 3, 2019
@Matsushima



Liaison Office Map



- ★ Liaison offices 7
- Inter-university agreement for educational and research cooperation 36
- Agreement for educational and research cooperation between the IFS and overseas academic organizations

Moscow State University



Moscow State University
250th Anniversary
Ceremony
(January, 2005)

September, 2010
**Tohoku University Russia
Office**

• Tohoku University Russia
Office Opening Ceremony
September 11th, 2010

June, 2002
Liaison Office
(University Level)

January, 2001
Faculty Level Liaison Office

February, 1998
University Level Agreement



**Tohoku University Russia
Office Opening Ceremony**



Second Liaison Office

University of New South Wales

University of Sydney



**April, 2001
University Level
Agreement (UNSW)**

**January, 1993
University Level
Agreement (Sydney)**

**September, 1999
Faculty Level Agreement
(Faculty of Engineering,
UNSW)**

*** UNSW and Sydney
University Strengthen the
role of Liaison Office as
Australia region in close
cooperation with each
other**

***May, 2002
Liaison Office***

**** University Study Abroad
Program (SAP)***

*** Stimulating Internship
program through GCOE
Program**



The University of Sydney

KTH Royal Institute of Technology



June, 2012
Liaison Office
(Re-established)
October 22nd, 2012
Opening Ceremony

2009~
Double Degree Program
(Graduate School of
Engineering·
Agricultural Science·
Information Science·
Environment Studies)

September, 2002
Liaison Office

September, 2000
University Level
Agreement

*** Liaison Office Re-
establish ceremony @ IFS**



Syracuse University



Joint Forum in 2016

**November, 2008
University Level
Agreement**

***November, 2003
Faculty Level Liaison
Office***

**April, 2001
Faculty Level Agreement
(L. C. Smith College of
Engineering and
Computer Science)**



*** L.C. Smith College of Engineering and Computer
Science, Syracuse University Liaison Office Opening
Ceremony (November 9th, 2003)**

Korea Advanced Institute of Science and Technology KAIST



**January, 1999
Faculty Level Agreement
(College of Engineering)**

**April, 2001
University Level
Agreement**

***December, 2002
Liaison Office***



*** Liaison Office Opening Ceremony at KAIST, December 18th, 2003**

*** Liaison Office Opening Ceremony at IFS February 24th, 2005**

Université de Lyon

2018 Lyon Center

2018 ElyTMaX-Mirror@Lyon

2017 EL y TGlobal

2016 ElyTMaX@Sendai

2015 ElyTMaX Signing Ceremony

2015 Liaison Office: Université de Lyon

2013 University Level Agreement: Université de Lyon

2012 University Level Agreement: ENMSE

2009 University Level Agreement: Lyon2

2008-2016 ELyT Lab

2008 University Level Agreement: ENS

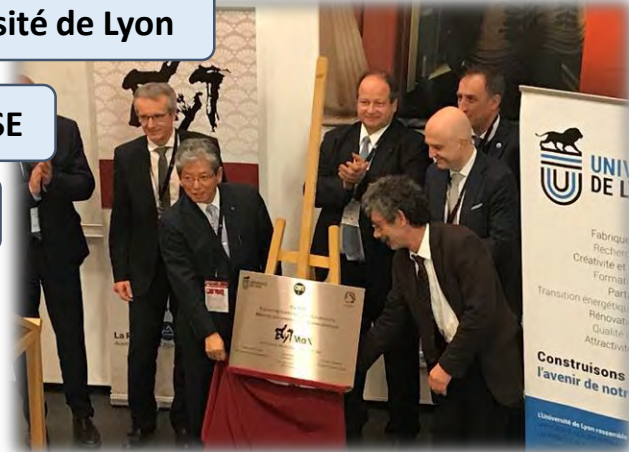
2007 Joint Anniversary Ceremony
(Teaming for the future): INSA-Lyon, ECL

2006 Double Degree Program: INSA-Lyon

2006 University Level Agreement, Double Degree Program: ECL

2004 Faculty Level Agreement, University Level Agreement,
Liaison Office: INSA-Lyon

since 1995





National Chiao Tung University(NCTU)



2018 Joint Research Center

2018 Student Exchange Program

2016 Liaison Office

2005 University Level Agreement



- **Communiqué of the Sendai Executive Forum on Inter-University Exchange**

Through these special issue sessions and panel discussions, we the participants in the Sendai Executive Forum on Inter-University Exchange have found ourselves in agreement on the following points, and therefore hereby proclaim the following Communiqué of the Sendai Executive Forum on Inter-University Exchange.

7. Development of Overseas Liaison Offices

- At present, Tohoku University has only one overseas branch, located in Novosibirsk.
- In our long-range planning, we hope to establish further points of contact throughout Asia, including China and Korea, as well as in North America and Europe.
- In addition to functioning as centers for the domestic and international research activities of Tohoku University faculty, these will function as windows through which foreign researchers and exchange students can contact Tohoku University, thereby supporting visits by foreign researchers and exchange students to our university.
- In particular, as one of our main future tasks, Tohoku University wishes to utilize these windows to assist the development of research and education networks throughout Asia.